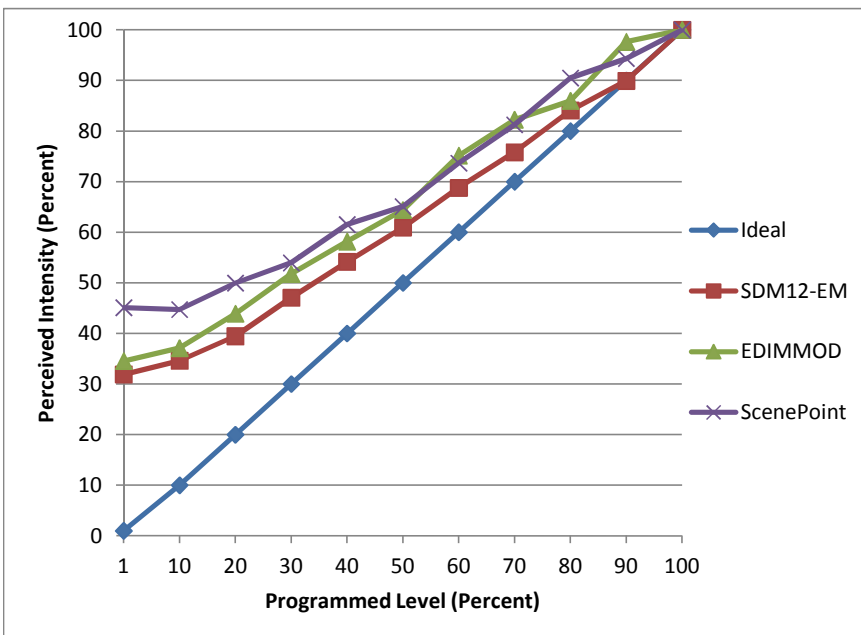


Manufacturer Xinban
Model xban
Description LED Filament Candle E12
Driver integrated
Nominal Power (W) 4
Dimming Control Forward - and Reverse - Phase
Product Range
Test Date 3/14/2016

Dimmer Tested Against:	SDM12-EM	EDIMMOD	ScenePoint
Pass/Fail	Pass	Pass	Pass
Best-Fit Power Profile:			
Minimum ON	20	14	25
Maximum ON	88	88	88
Adjust	100	100	100
Light Output Range (vs. non-dimmed)			
Maximum (Perceived)	97.7%	95.0%	95.0%
Minimum (Perceived)	31.2%	32.8%	42.8%
Minimum (Measured)	9.7%	10.8%	18.4%

Linearity Curves (Best-fit Power Profile Applied):



Observations: Dimming behavior is not consistently repeatable