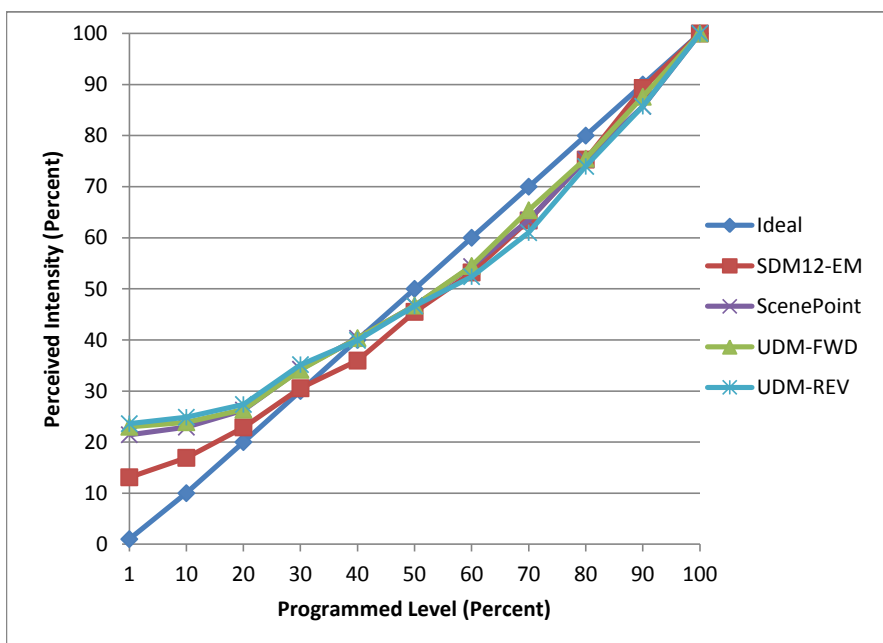


Manufacturer Utilitech
Model LR20DM LED
Description R 20 Lamp
Driver Integrated
Nominal Power (W) 8
Dimming Control Forward and Reverse
Product Range -
Test Date 6/23/2016

Dimmer Tested Against:	SDM12-EM	ScenePoint	UDM-FWD	UDM-REV
Pass/Fail	Pass	Pass	Pass	Pass
Best-Fit Power Profile:				
Minimum ON	2	5	5	8
Maximum ON	84	84	84	80
Adjust	100	100	100	100
Light Output Range (vs. non-dimmed)				
Maximum (Perceived)	96.3%	96.2%	96.0%	94.6%
Minimum (Perceived)	12.6%	20.6%	22.1%	22.3%
Minimum (Measured)	1.6%	4.3%	4.9%	5.0%

Linearity Curves (Best-fit Power Profile Applied):



Observations:

Has Transistional Jumps
 Light Value drops as it heats up
 bgk