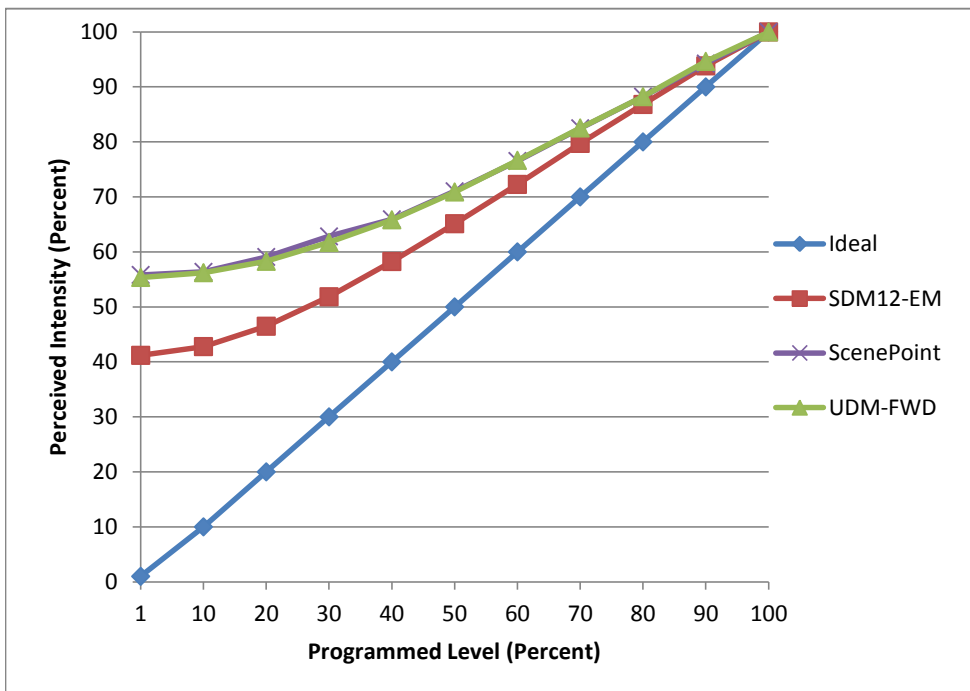


Manufacturer Universal Lighting Systems
Model LX3-PAR36-FL-27K
Description PAR 36 Lamp
Driver Integrated
Nominal Power (W) 8
Dimming Control Forward
Product Range -
Test Date 10/10/2016

Dimmer Tested Against:	SDM12-EM	Scenepoint	UDM-FWD
Pass/Fail	Pass	Pass	Pass
Best-Fit Power Profile:			
Minimum ON	3	5	5
Maximum ON	14	13	13
Adjust	100	100	100
Light Output Range (vs. non-dimmed)			
Maximum (Perceived)	94.9%	94.9%	95.8%
Minimum (Perceived)	39.1%	53.0%	53.0%
Minimum (Measured)	15.3%	28.1%	28.1%

Linearity Curves (Best-fit Power Profile Applied):



Observations:

Slight Buzzing

bgk