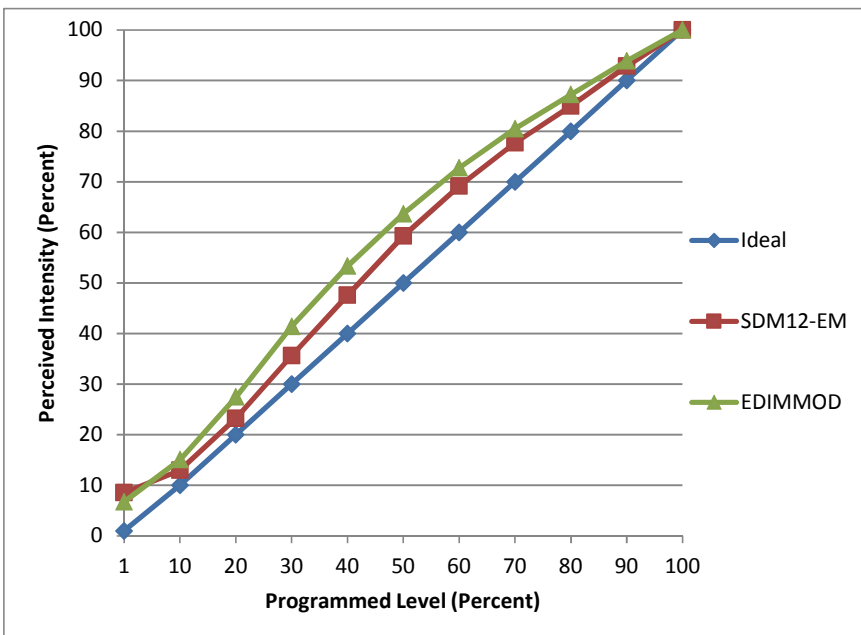


Manufacturer U.S. Green Lighting
Model DL6D-12W-27
Description 6" LED Recessed Retrofit
Driver Integrated
Nominal Power (W) 12
Dimming Control forward- and reverse-phase
Product Range
Test Date 2/24/2015

Dimmer Tested Against:	SDM12-EM	EDIMMOD	
Pass/Fail	Pass	Pass	
Best-Fit Power Profile:			
Minimum ON	2	1	
Maximum ON	82	66	
Adjust	100	100	
Light Output Range (vs. non-dimmed)			
Maximum (Perceived)	95.4%	95.5%	
Minimum (Perceived)	8.2%	6.4%	
Minimum (Measured)	0.7%	0.4%	

Linearity Curves (Best-fit Power Profile Applied):



Observations: