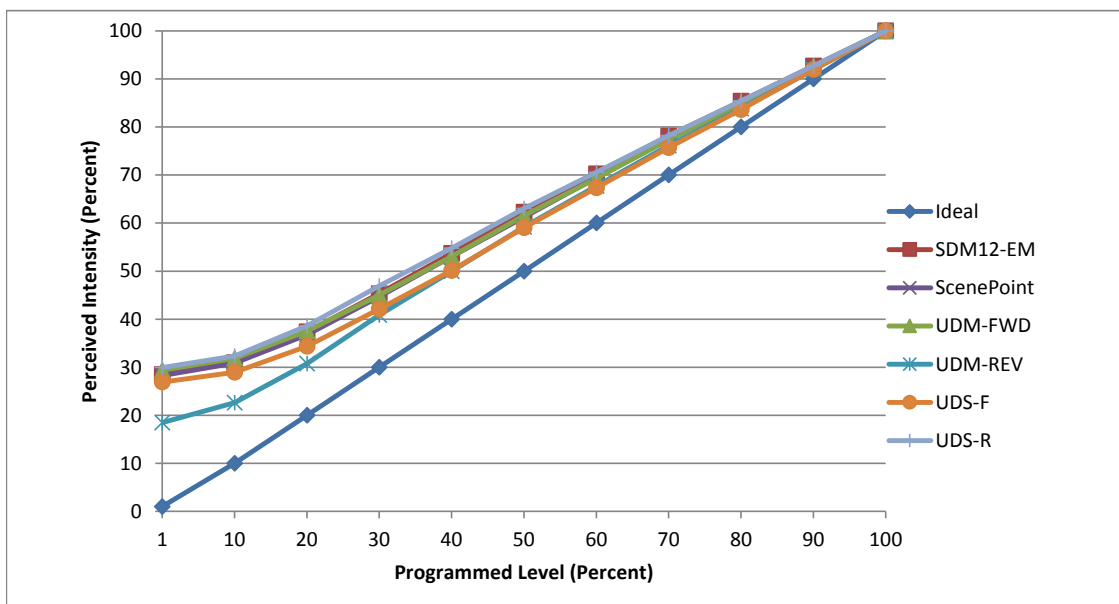


Manufacturer Tech Lighting
Model Element 351EN3LED3000
Description 3 inch 3000k downlight module
Driver ERP ESS202W-0450-42
Nominal Power (W) 18
Dimming Control Forward and Reverse Phase
Product Range Element
Test Date 20 August, 2019

Dimmer Tested Against:	SDM12-EM	ScenePoint	UDM-FWD	UDM-REV	UDS-F	UDS-R
Commercial Pass/Fail	Pass	Pass	Pass	Pass	Pass	Pass
Residential Pass/Fail	Pass	Pass	Pass	Pass	Pass	Pass
Best-Fit Power Profile:						
Minimum ON	4	5	4.5	3	5.5	3.5
Maximum ON	68	70	69.5	70	73	66
Adjust	100	100	100	100	100	100
Light Output Range (vs. non-dimmed)						
Maximum (Perceived), 120V	95.4%	94.7%	95.1%	94.8%	94.3%	95.2%
Minimum (Perceived)	27.1%	26.8%	27.9%	17.5%	25.4%	28.5%
Minimum (Measured)	7.4%	7.2%	7.8%	3.1%	6.4%	8.1%

Linearity Curves (Best-fit Power Profile Applied):



jwm

Observations: Test performed in three unit configuration (one driver per bulb).