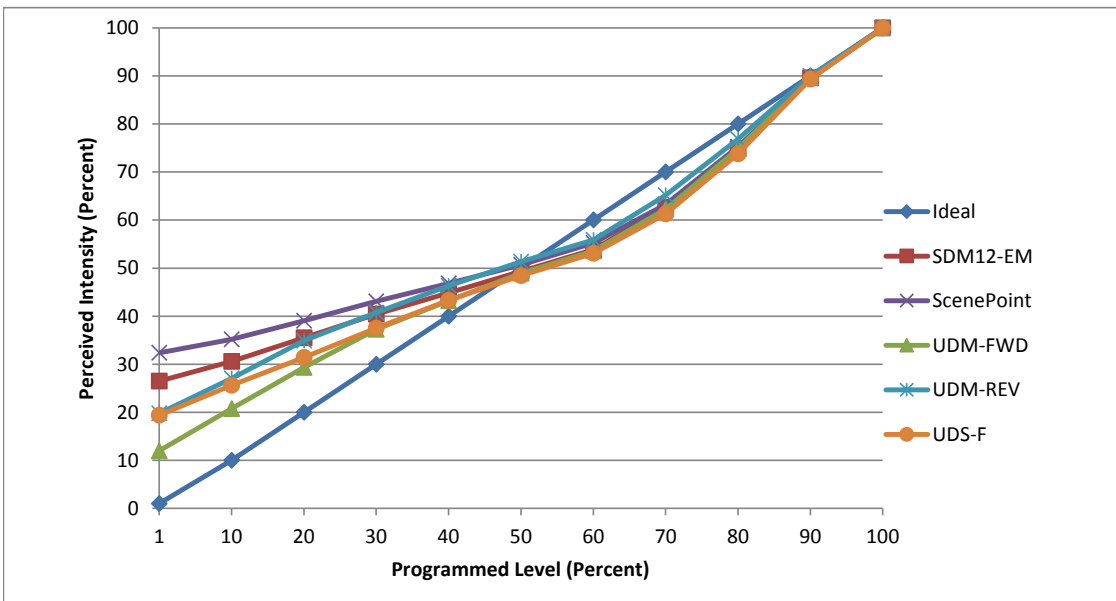


**Manufacturer** TCP  
**Model** LED9BR30D41K  
**Description** Flood Bulb  
**Driver** built-in  
**Nominal Power (W)** 9.5  
**Dimming Control** Forward and Reverse Phase  
**Product Range** Elite Series  
**Test Date** 17 December, 2019

Dimmer Tested Against:	SDM12-EM	ScenePoint	UDM-FWD	UDM-REV	UDS-F	UDS-R
<b>Commercial Pass/Fail</b>	Pass	Pass	Pass	Pass	Pass	Fail
<b>Residential Pass/Fail</b>	Pass	Pass	Pass	Pass	Pass	Fail
<b>Best-Fit Power Profile:</b>						
Minimum ON	22.5	30	16	20	22.5	-
Maximum ON	72	71.5	7.5	76	77.5	-
Adjust	50	55	20	20	30	-
<b>Light Output Range (vs. non-dimmed)</b>						
Maximum (Perceived), 120V	95.4%	95.1%	94.9%	94.0%	95.2%	95.0%
Minimum (Perceived)	25.3%	30.8%	11.4%	18.6%	18.5%	1.0%
Minimum (Measured)	6.4%	9.5%	1.3%	3.4%	3.4%	0.0%

Linearity Curves (Best-fit Power Profile Applied):



jwm

**Observations:** Test performed in six unit configuration.  
 UDS reverse phase failed for unacceptable light shelving on high end.