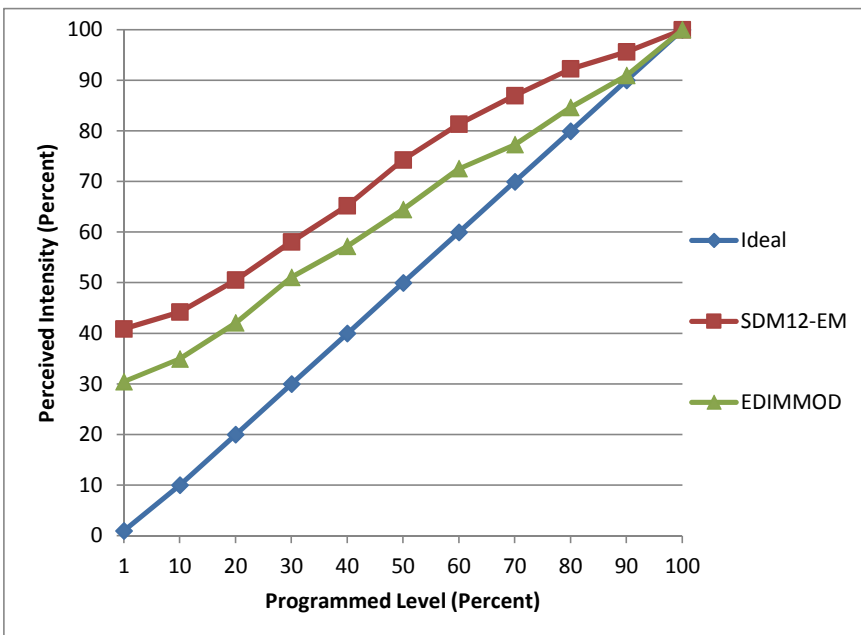


Manufacturer TCP
Model LED712VMR1627KNFL
Description MR16
Driver Electronic Transformer (undisclosed), USAI 3251C fixture
Nominal Power (W) 7
Dimming Control forward- and reverse-phase
Product Range Elite Series
Test Date 6/16/2015

Dimmer Tested Against:	SDM12-EM	EDIMMOD	
Pass/Fail	Pass	Pass	
Best-Fit Power Profile:			
Minimum ON	3	3	
Maximum ON	75	92	
Adjust	100	100	
Light Output Range (vs. non-dimmed)			
Maximum (Perceived)	95.3%	95.1%	
Minimum (Perceived)	39.0%	29.0%	
Minimum (Measured)	15.2%	8.4%	

Linearity Curves (Best-fit Power Profile Applied):



Observations: