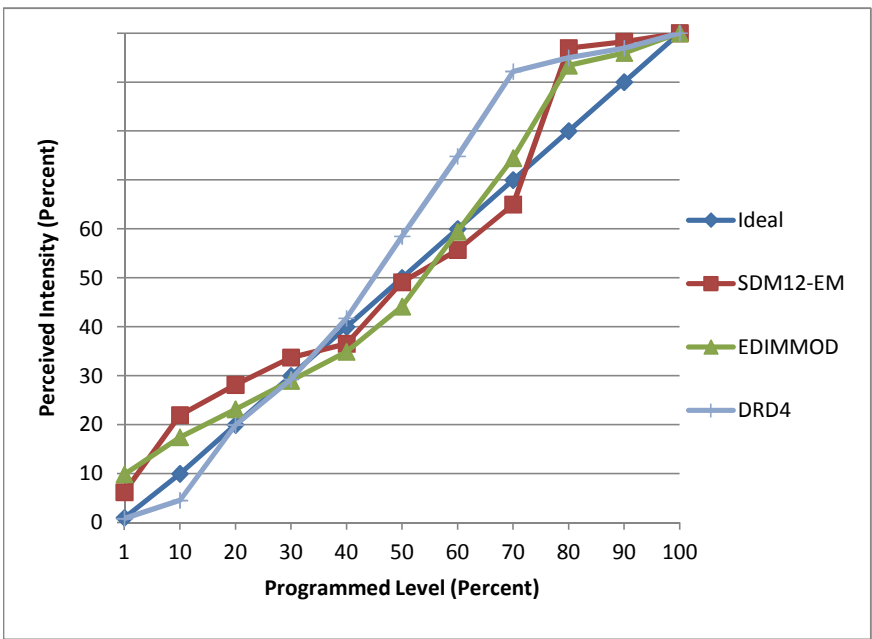


Manufacturer Sylvania
Model LED13PAR30LN/DIM/830/FL40
Description PAR30 LED lamp
Driver internal
Nominal Power (W) 13
Dimming Control Forward- and Reverse-phase
Product Range
Test Date 9/27/2013

Dimmer Tested Against:	SDM12-EM	EDIMMOD	DRD4
Pass/Fail	See Notes	Pass	
Best-Fit Power Profile:			
Minimum ON	10	10	
Maximum ON	77	80	
Adjust	0	50	
Light Output Range (vs. non-dimmed)			
Maximum (Perceived)	95.6%	95.2%	100.0%
Minimum (Perceived)	6.0%	9.4%	0.8%
Minimum (Measured)	0.4%	0.9%	0.0%

Linearity Curves (Best-fit Power Profile Applied):



Observations:

Notes:

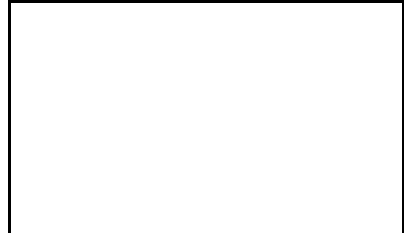
Does not dim with the SDM12-EM without special pulse-mode drive enabled. These results are with that mode enabled.

DRD4 cuts off at 10%.

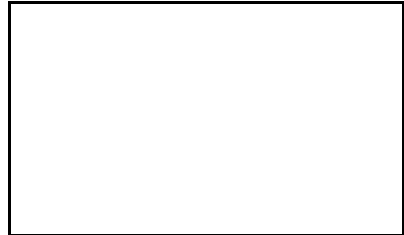
Tested against ScenePoint Dimmer and FAILS - constant flickering.

Forward-phase

100% Dim Level Waveform Capture

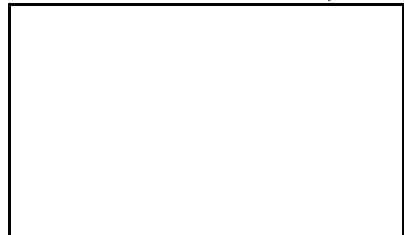


50% Dim Level Waveform Capture



Reverse-phase

100% Dim Level Waveform Capture



50% Dim Level Waveform Capture

