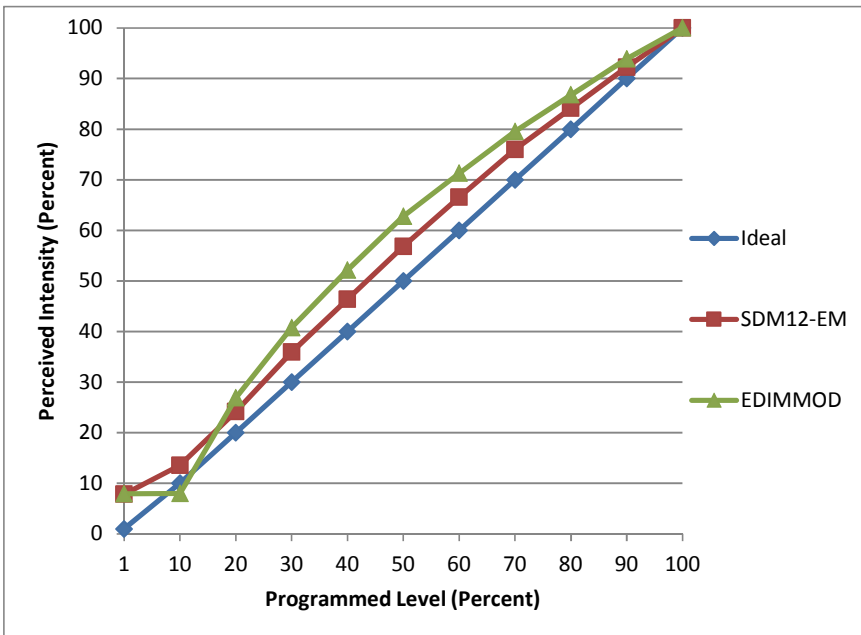


Manufacturer Sylvania
Model LED/RT6/700/830/FL80
Description 6" Recessed Kit
Driver Integrated
Nominal Power (W) 10
Dimming Control Forward- and reverse-phase
Product Range ULTRA LED
Test Date 3/30/2015

Dimmer Tested Against:	SDM12-EM	EDIMMOD	
Pass/Fail	Fail	Pass	
Best-Fit Power Profile:			
Minimum ON	1.5	0	
Maximum ON	86	80	
Adjust	100	100	
Light Output Range (vs. non-dimmed)			
Maximum (Perceived)	95.1%	95.1%	
Minimum (Perceived)	7.5%	7.5%	
Minimum (Measured)	0.6%	0.6%	

Linearity Curves (Best-fit Power Profile Applied):



Observations:

Failed against forward-phase dimmers because without parallel load, will not dim smoothly, rather has a sudden jump in level. The curve shown should generally be ignored, as it was achieved by paralleling resistive load.