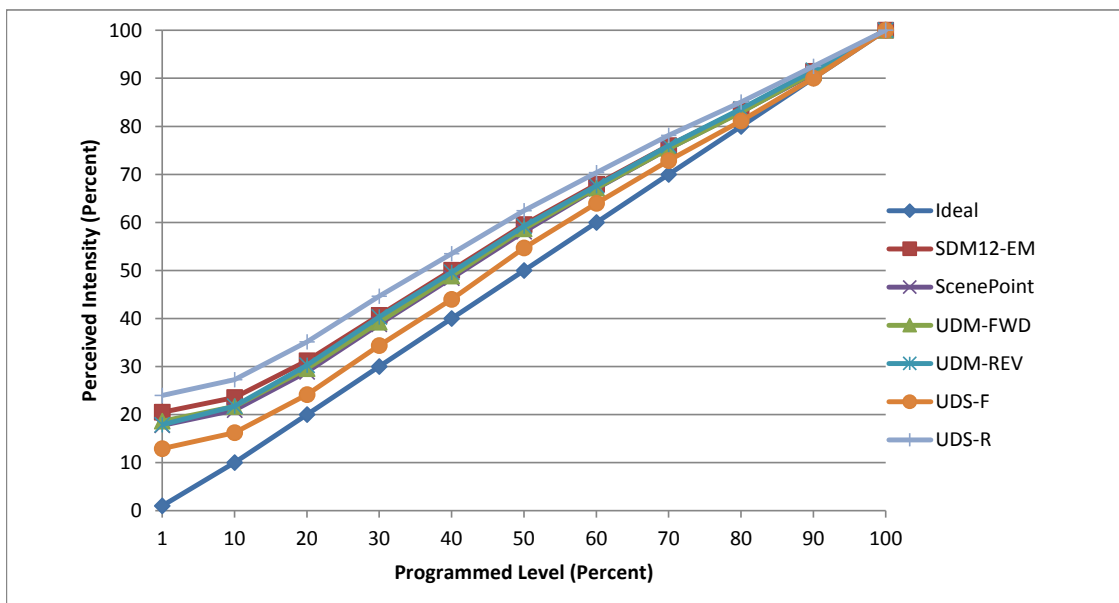


Manufacturer Sylvania
Model LED17A21
Description 1600 L 2700K A21 bulb
Driver built-in
Nominal Power (W) 17
Dimming Control Forward and Reverse Phase
Product Range High Definition LED
Test Date 19-Jun-19

Dimmer Tested Against:	SDM12-EM	ScenePoint	UDM-FWD	UDM-REV	UDS-F	UDS-R
Pass/Fail	Pass	Pass	Pass	Pass	Pass	Pass
Best-Fit Power Profile:						
Minimum ON	2.5	2.5	2.5	2.5	2.5	2.5
Maximum ON	82	83.5	82.5	80	85.5	75.5
Adjust	100	100	100	100	100	100
Light Output Range (vs. non-dimmed)						
Maximum (Perceived), 120V	94.9%	95.2%	95.3%	94.8%	95.3%	95.1%
Minimum (Perceived)	19.4%	16.9%	17.7%	17.0%	12.3%	22.8%
Minimum (Measured)	3.8%	2.9%	3.1%	2.9%	1.5%	5.2%

Linearity Curves (Best-fit Power Profile Applied):



jwm

Observations: Test performed in five unit configuration.