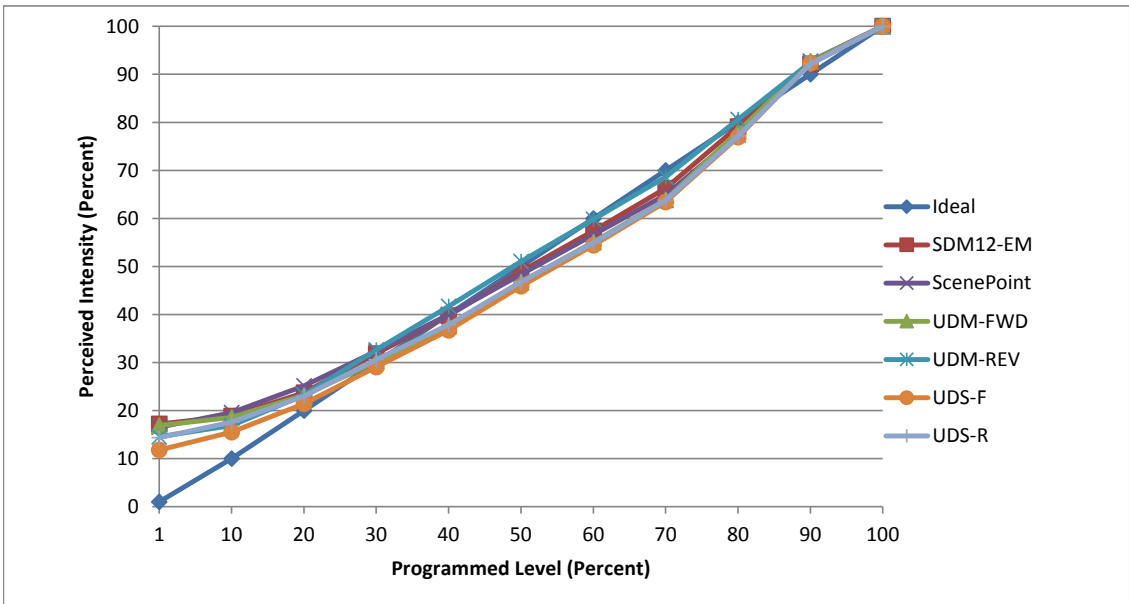


**Manufacturer** Soraa  
**Model** SP30L-18-09D-927-03  
**Description** 2700 K 930 L PAR30L flood light  
**Driver** built-in  
**Nominal Power (W)** 18.5  
**Dimming Control** Forward and Reverse Phase  
**Product Range** Vivid  
**Test Date** 6 August, 2018

Dimmer Tested Against:	SDM12-EM	SCP	UDM-FWD	UDM-REV	UDS-F	UDS-R
Pass/Fail	Pass	Pass	Pass	Pass	Pass	Pass
<b>Best-Fit Power Profile:</b>						
Minimum ON	5	5	5	4	5	6
Maximum ON	67	65	65	69	71	70
Adjust	100	90	100	100	85	85
<b>Light Output Range (vs. non-dimmed)</b>						
Maximum (Perceived), 120V	95.2%	94.9%	95.0%	95.1%	95.2%	95.0%
Minimum (Perceived)	16.4%	15.7%	16.0%	13.8%	11.2%	13.6%
Minimum (Measured)	2.7%	2.5%	2.6%	1.9%	1.3%	1.9%

Linearity Curves (Best-fit Power Profile Applied):



**Observations:** Testing done with 2 unit configuration

jwm