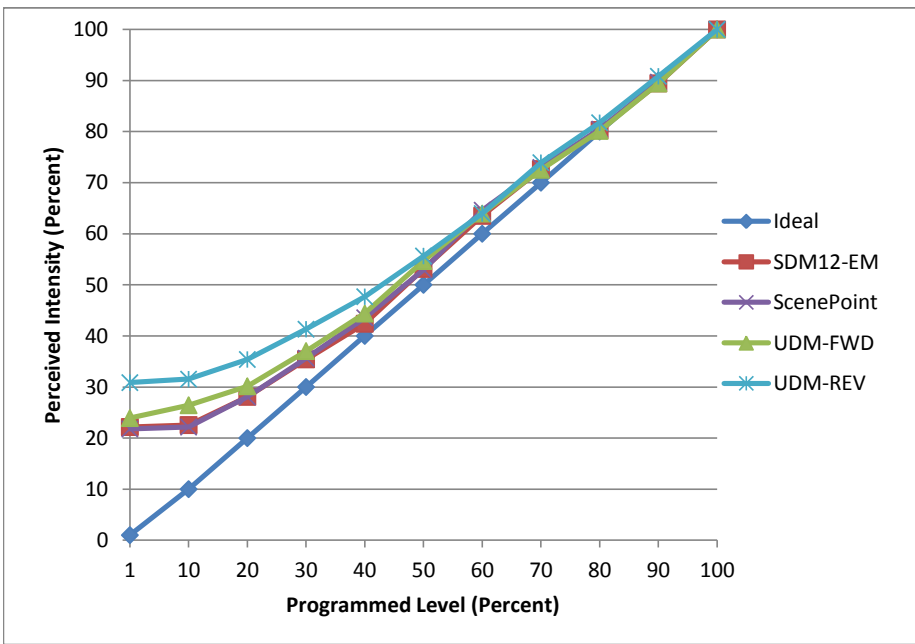


Manufacturer Solais
Model Xd20-25-30K-900-SV-J
Description Xd20 track light
Driver Integrated
Nominal Power (W) 12.5
Dimming Control Forward and Reverse
Product Range -
Test Date 11/15/2016

Dimmer Tested Against:	SDM12-EM	Scenepoint	UDM-FWD	UDM-REV
Pass/Fail	Pass	Pass	Pass	Pass
Best-Fit Power Profile:				
Minimum ON	13	13	14	16
Maximum ON	86	86	85	85
Adjust	100	100	100	100
Light Output Range (vs. non-dimmed)				
Maximum (Perceived)	95.9%	95.3%	95.9%	95.5%
Minimum (Perceived)	21.3%	20.8%	23.0%	29.5%
Minimum (Measured)	4.5%	4.3%	5.3%	8.7%

Linearity Curves (Best-fit Power Profile Applied):



Observations:

bgk