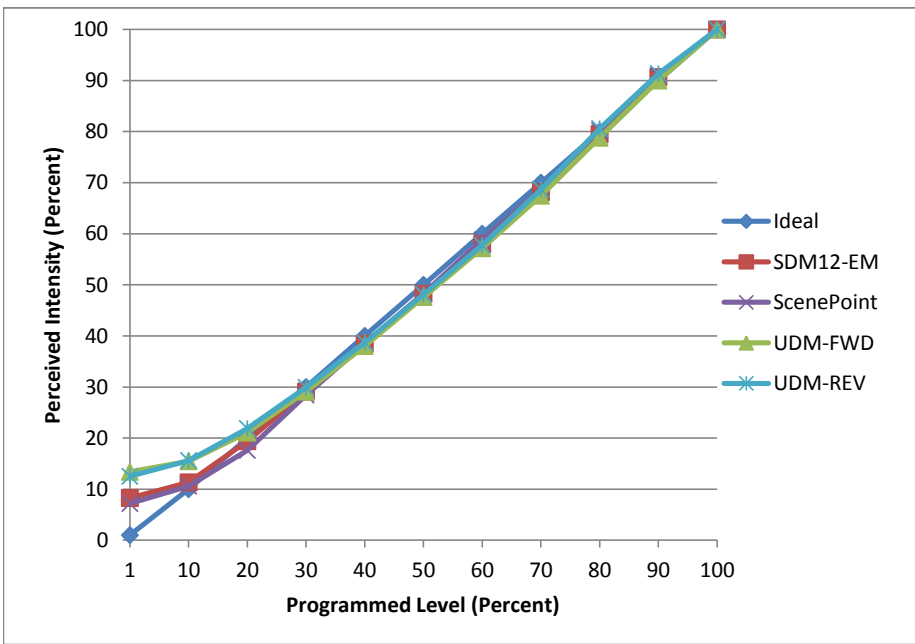


Manufacturer Solais
Model LR38-25-30K-2400-WH
Description LR38 Lamp
Driver Integrated
Nominal Power (W) 28
Dimming Control Forward and Reverse
Product Range -
Test Date 11/8/2016

Dimmer Tested Against:	SDM12-EM	Scenepoint	UDM-FWD	UDM-REV
Pass/Fail	Pass	Pass	Pass	Pass
Best-Fit Power Profile:				
Minimum ON	7	8	10	10
Maximum ON	62	64	62	60
Adjust	90	80	95	90
Light Output Range (vs. non-dimmed)				
Maximum (Perceived)	95.4%	95.2%	95.3%	95.2%
Minimum (Perceived)	7.9%	6.8%	12.8%	11.9%
Minimum (Measured)	0.6%	0.5%	1.6%	1.4%

Linearity Curves (Best-fit Power Profile Applied):



Observations:

bgk