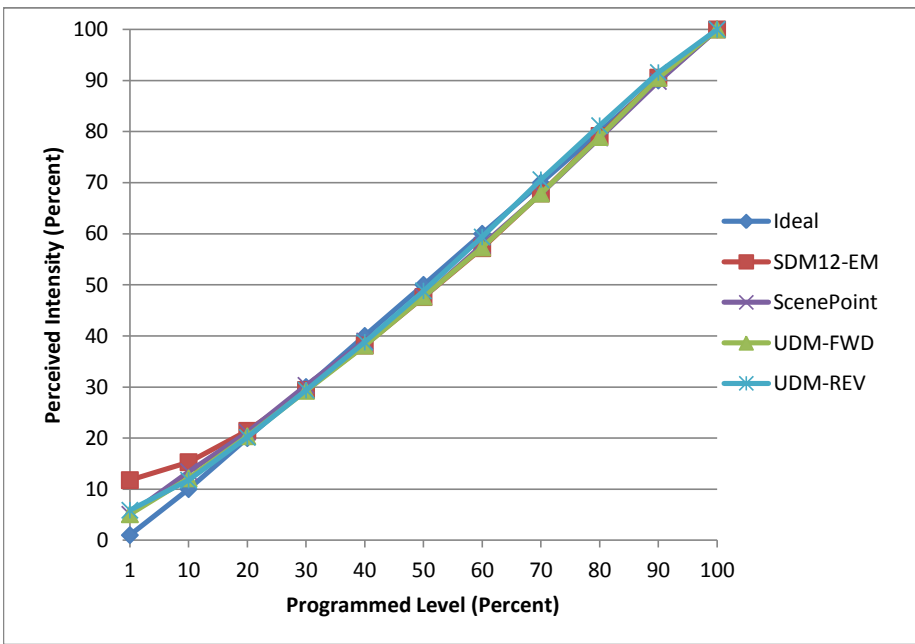


Manufacturer Solais
Model LR20-25-30K-1000-WH
Description LR20 Lamp
Driver Integrated
Nominal Power (W) 12
Dimming Control Forward and Reverse
Product Range -
Test Date 11/4/2016

Dimmer Tested Against:	SDM12-EM	Scenepoint	UDM-FWD	UDM-REV
Pass/Fail	Pass	Pass	Pass	Pass
Best-Fit Power Profile:				
Minimum ON	16	18	17	17
Maximum ON	57	59	59	57
Adjust	90	85	85	85
Light Output Range (vs. non-dimmed)				
Maximum (Perceived)	95.2%	95.2%	95.3%	95.2%
Minimum (Perceived)	11.2%	4.8%	4.9%	5.6%
Minimum (Measured)	1.3%	0.2%	0.2%	0.3%

Linearity Curves (Best-fit Power Profile Applied):



Observations:

Minimum of 3 lamps

bgk