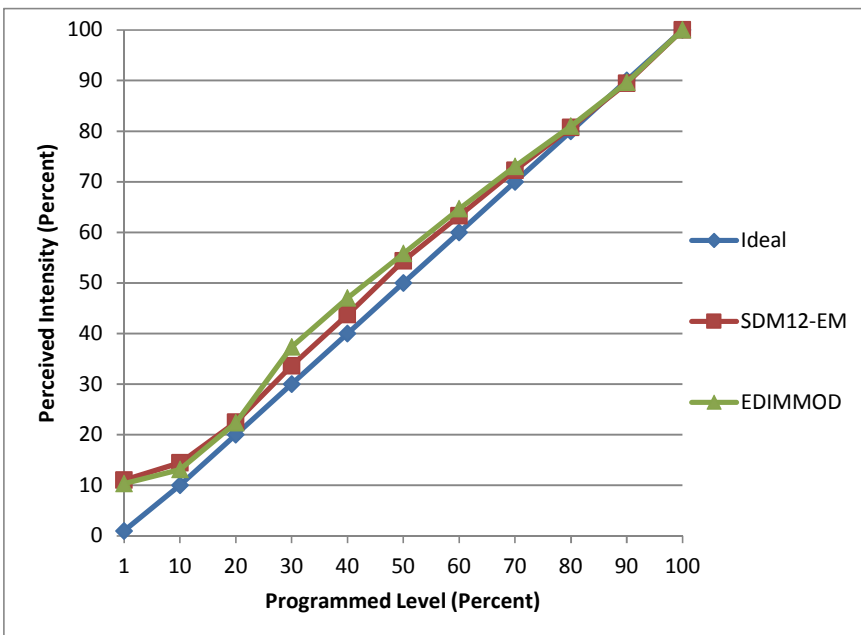


Manufacturer SinChun
Model ST64-4S4W E27
Description E27 LED Bulb - filament LED
Driver integrated
Nominal Power (W) 5
Dimming Control Forward- and reverse-phase
Product Range
Test Date 6/4/2015

Dimmer Tested Against:	SDM12-EM	EDIMMOD	
Pass/Fail	Pass	Pass	
Best-Fit Power Profile:			
Minimum ON	8	8	
Maximum ON	80	80	
Adjust	80	100	
Light Output Range (vs. non-dimmed)			
Maximum (Perceived)	95.2%	95.1%	
Minimum (Perceived)	10.5%	9.8%	
Minimum (Measured)	1.1%	1.0%	

Linearity Curves (Best-fit Power Profile Applied):



Observations:

For a ScenePoint dimmer, the Minimum ON should be increased to 10.