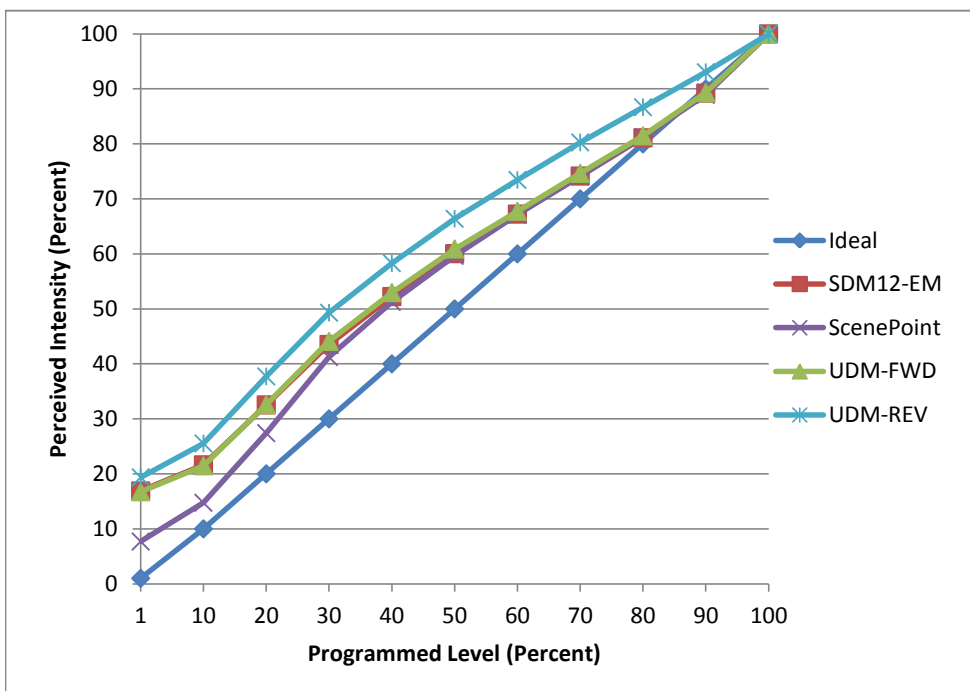


Manufacturer Satco
Model S9579
Description Vintage LED
Driver Integrated
Nominal Power (W) 6.5
Dimming Control Forward and Reverse
Product Range -
Test Date 9/6/2016

Dimmer Tested Against:	SDM12-EM	Scenepoint	UDM-FWD	UDM-REV
Pass/Fail	Pass	Pass	Pass	Pass
Best-Fit Power Profile:				
Minimum ON	1.5	1	1	1.5
Maximum ON	95	96	95	92
Adjust	100	100	100	100
Light Output Range (vs. non-dimmed)				
Maximum (Perceived)	95.4%	95.4%	95.1%	95.0%
Minimum (Perceived)	16.1%	7.3%	15.9%	18.4%
Minimum (Measured)	2.6%	0.5%	2.5%	3.4%

Linearity Curves (Best-fit Power Profile Applied):



Observations:

bgk