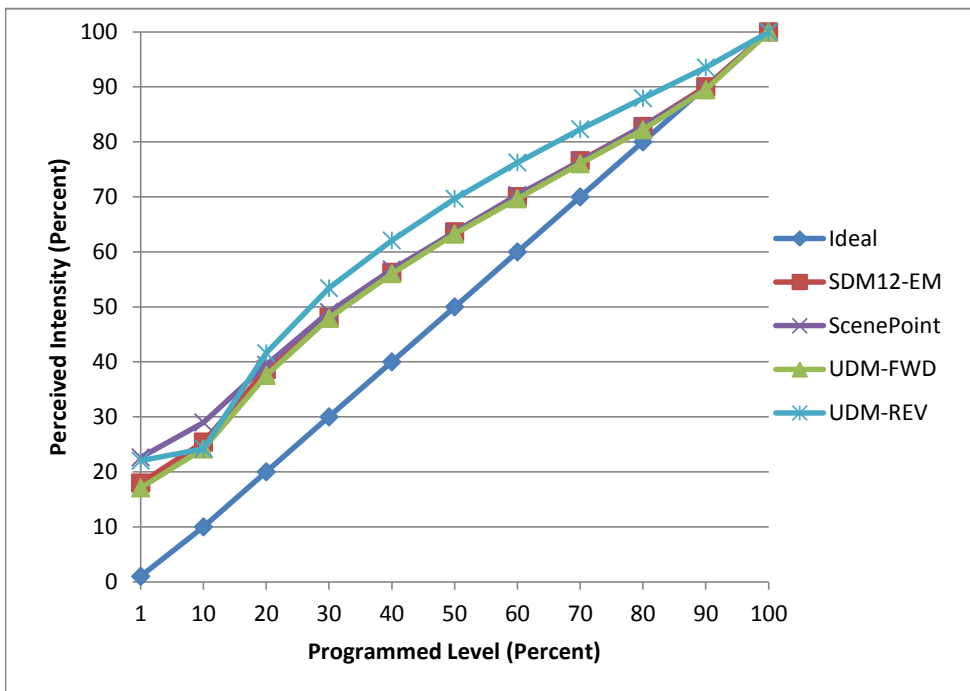


Manufacturer Satco
Model S9400
Description PAR 20 Lamp
Driver Integrated
Nominal Power (W) 7
Dimming Control Forward and Reverse
Product Range -
Test Date 9/12/2016

Dimmer Tested Against:	SDM12-EM	Scenepoint	UDM-FWD	UDM-REV
Pass/Fail	Pass	Pass	Pass	Pass
Best-Fit Power Profile:				
Minimum ON	2	3	2	3
Maximum ON	94	95	95	92
Adjust	100	100	100	100
Light Output Range (vs. non-dimmed)				
Maximum (Perceived)	95.7%	95.4%	95.7%	95.3%
Minimum (Perceived)	17.2%	21.6%	16.3%	21.0%
Minimum (Measured)	3.0%	4.7%	2.7%	4.4%

Linearity Curves (Best-fit Power Profile Applied):



Observations:

ScenePoint has a little transitional jump issue

bgk