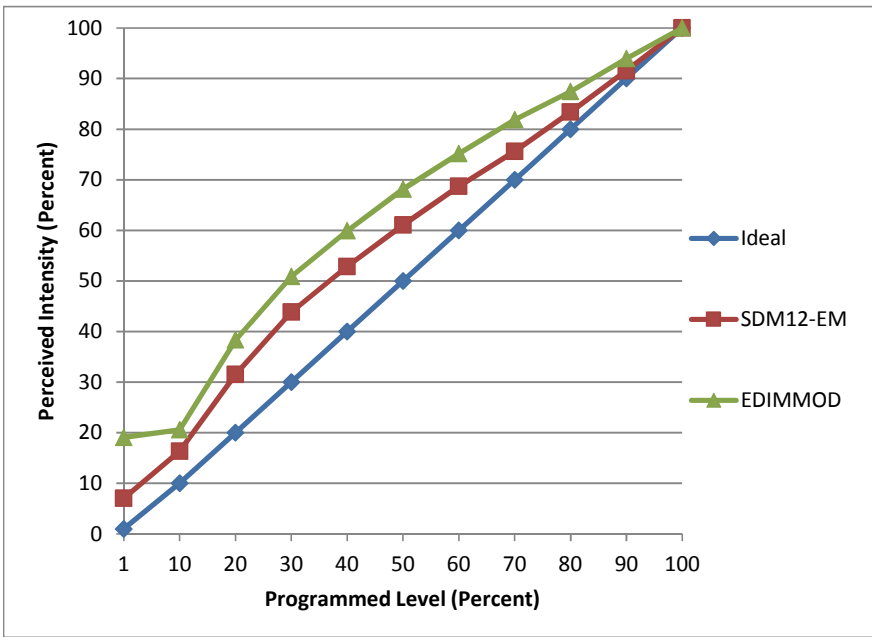


Manufacturer Satco
Model S9265
Description LED Flame-Tip lamp
Driver integrated
Nominal Power (W) 4.5
Dimming Control forward- and reverse-phase
Product Range
Test Date 10/2/2015

Dimmer Tested Against:	SDM12-EM	EDIMMOD	
Pass/Fail	Pass	Pass	
Best-Fit Power Profile:			
Minimum ON	1	0	
Maximum ON	95	90	
Adjust	100	100	
Light Output Range (vs. non-dimmed)			
Maximum (Perceived)	95.1%	95.1%	
Minimum (Perceived)	6.7%	18.2%	
Minimum (Measured)	0.4%	3.3%	

Linearity Curves (Best-fit Power Profile Applied):



Observations:

There are significant inrush current spikes with forward-phase, leading to the recommended preference of reverse-phase.