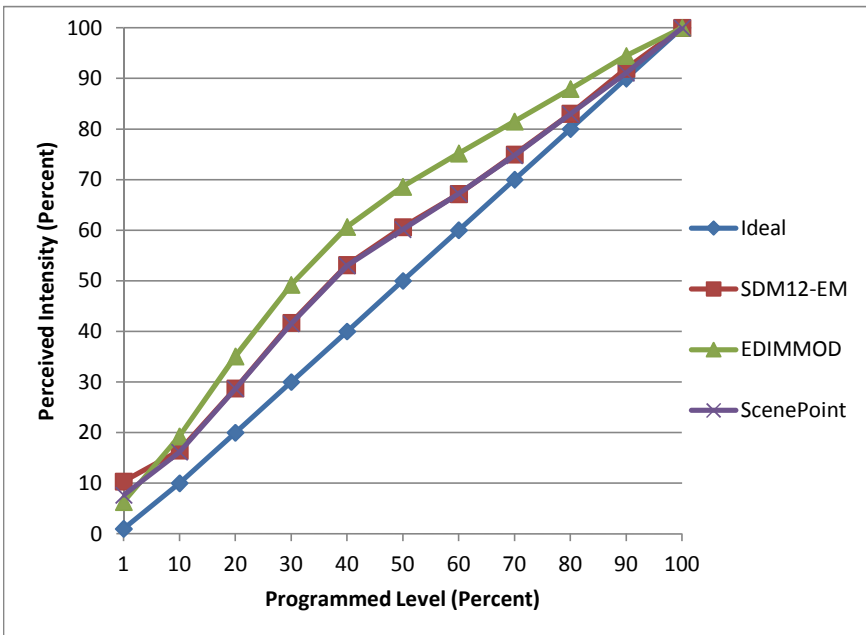


Manufacturer Satco
Model S9141
Description Replacement R20
Driver Integrated
Nominal Power (W) 7
Dimming Control Forward- and Reverse- phase
Product Range
Test Date 3/14/2016

Dimmer Tested Against:	SDM12-EM	EDIMMOD	ScenePoint
Pass/Fail	Pass	Pass	Pass
Best-Fit Power Profile:			
Minimum ON	3	1	3
Maximum ON	92	84	90
Adjust	100	100	100
Light Output Range (vs. non-dimmed)			
Maximum (Perceived)	95.0%	95.6%	95.6%
Minimum (Perceived)	9.8%	6.0%	7.3%
Minimum (Measured)	1.0%	0.4%	0.5%

Linearity Curves (Best-fit Power Profile Applied):



Observations: