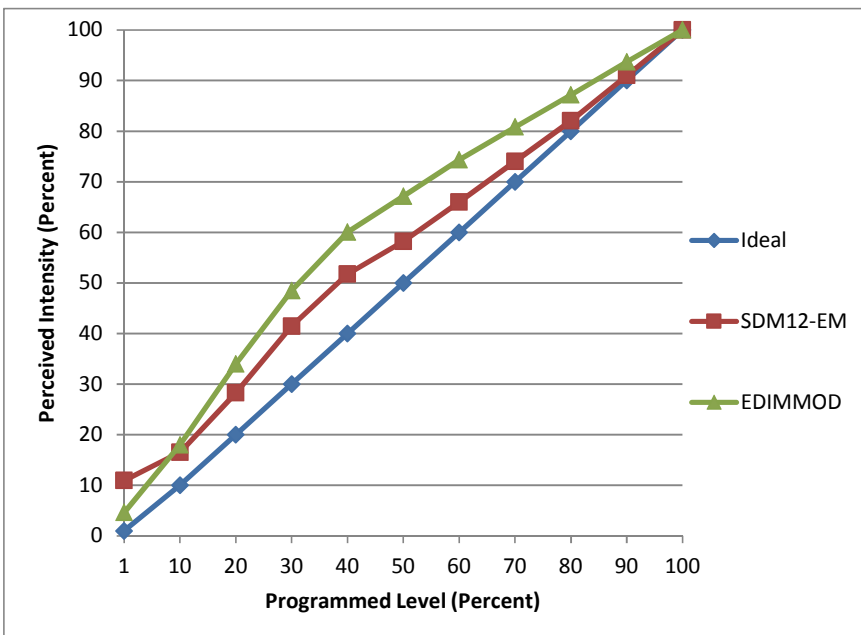


Manufacturer SATCO
Model E335148
Description R20 LED Lamp
Driver integrated
Nominal Power (W) 7
Dimming Control Forward- and reverse-phase
Product Range
Test Date 7/22/2014

Dimmer Tested Against:	SDM12-EM	EDIMMOD	
Pass/Fail	Pass	Pass	
Best-Fit Power Profile:			
Minimum ON	2.5	1	
Maximum ON	92	83	
Adjust	100	100	
Light Output Range (vs. non-dimmed)			
Maximum (Perceived)	95.1%	95.1%	
Minimum (Perceived)	10.4%	4.4%	
Minimum (Measured)	1.1%	0.2%	

Linearity Curves (Best-fit Power Profile Applied):



Observations:

Single-sample test.