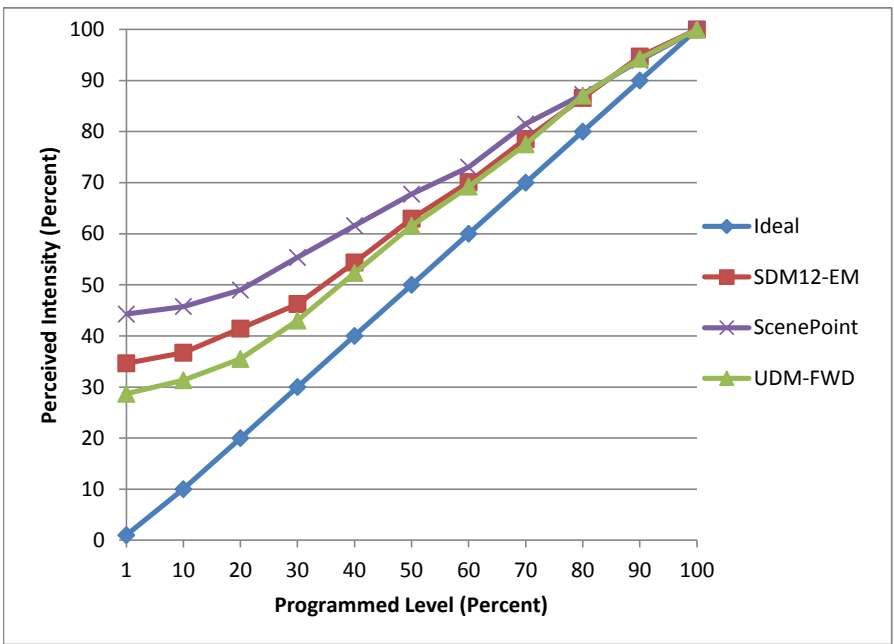


**Manufacturer** Revolt LED  
**Model** RL-6WMR16  
**Description** MR16  
**Driver** Juno IC44N  
**Nominal Power (W)** 6  
**Dimming Control** Forward  
**Product Range** -  
**Test Date** 6/30/2016

Dimmer Tested Against:	SDM12-EM	ScenePoint	UDM-FWD
Pass/Fail	Pass	Pass	Pass
<b>Best-Fit Power Profile:</b>			
Minimum ON	7	10	7
Maximum ON	28	27	30
Adjust	100	100	100
<b>Light Output Range (vs. non-dimmed)</b>			
Maximum (Perceived)	95.5%	95.7%	95.7%
Minimum (Perceived)	33.1%	42.4%	27.4%
Minimum (Measured)	10.9%	17.9%	7.5%

Linearity Curves (Best-fit Power Profile Applied):



Observations:

bgk