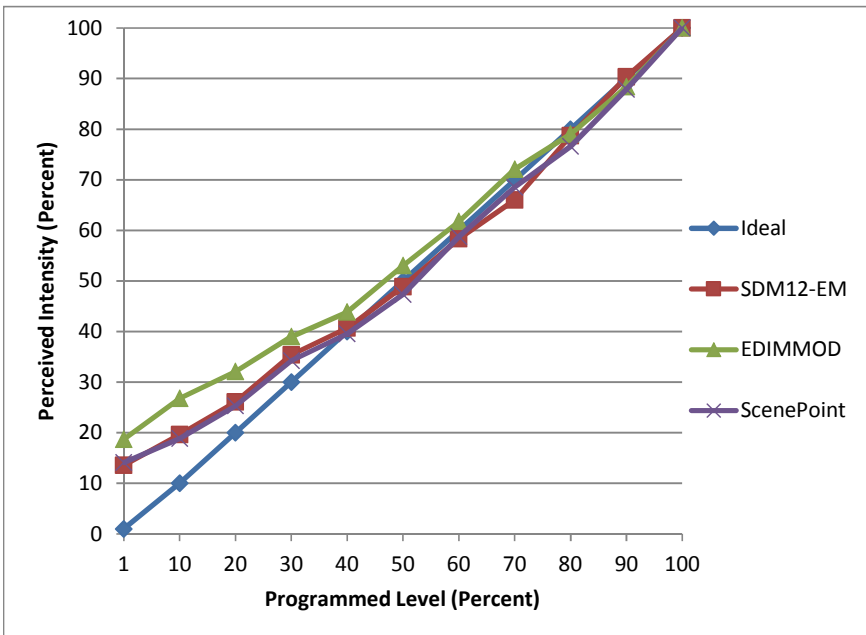


Manufacturer RAB
Model RDLED2R8-40Y-TLW
Description Remodel 2" round trimless
Driver RD-008-E1-A0200
Nominal Power (W) 8
Dimming Control forward-phase
Product Range
Test Date 2/9/2016

Dimmer Tested Against:	SDM12-EM	EDIMMOD	ScenePoint
Pass/Fail	Pass	Pass	Pass
Best-Fit Power Profile:			
Minimum ON	4	5	4
Maximum ON	86	80	86
Adjust	60	50	60
Light Output Range (vs. non-dimmed)			
Maximum (Perceived)	96.3%	96.0%	96.0%
Minimum (Perceived)	13.1%	17.9%	13.5%
Minimum (Measured)	1.7%	3.2%	1.8%

Linearity Curves (Best-fit Power Profile Applied):



Observations: