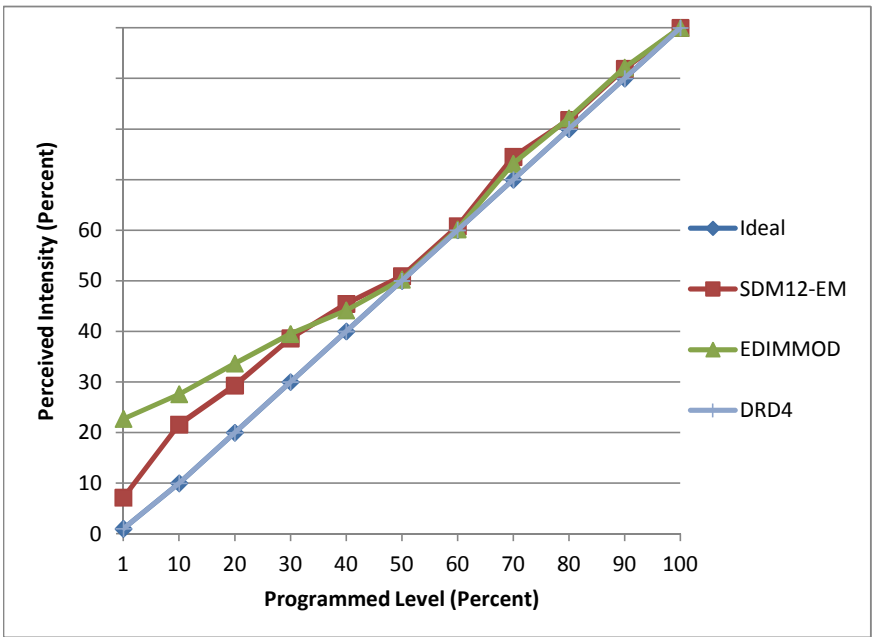


**Manufacturer** Progress Lighting  
**Model** P8080  
**Description** 4" Open Trim Recessed  
**Driver** Integral  
**Nominal Power (W)** 9  
**Dimming Control** forward- and reverse-phase  
**Product Range**  
**Test Date** 11/6/2013

Dimmer Tested Against:	SDM12-EM	EDIMMOD	DRD4
Pass/Fail	Pass		
<b>Best-Fit Power Profile:</b>			
Minimum ON	2	6	
Maximum ON	82	85	
Adjust	70	80	
<b>Light Output Range (vs. non-dimmed)</b>			
Maximum (Perceived)	94.9%	94.7%	100.0%
Minimum (Perceived)	6.8%	21.5%	1.0%
Minimum (Measured)	0.5%	4.6%	0.0%

Linearity Curves (Best-fit Power Profile Applied):

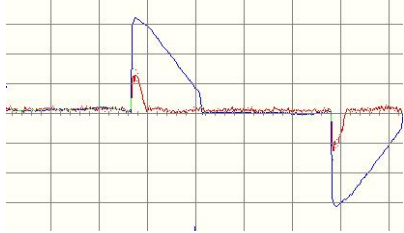


**Observations:** Steps during fade / ramp. Hums slightly when dimmed.

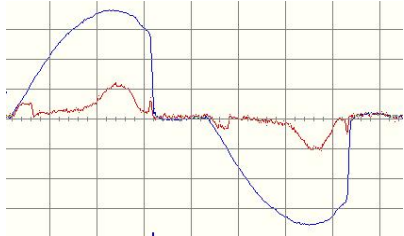
**Forward-phase**  
100% Dim Level Waveform Capture



50% Dim Level Waveform Capture



**Reverse-phase**  
100% Dim Level Waveform Capture



50% Dim Level Waveform Capture

