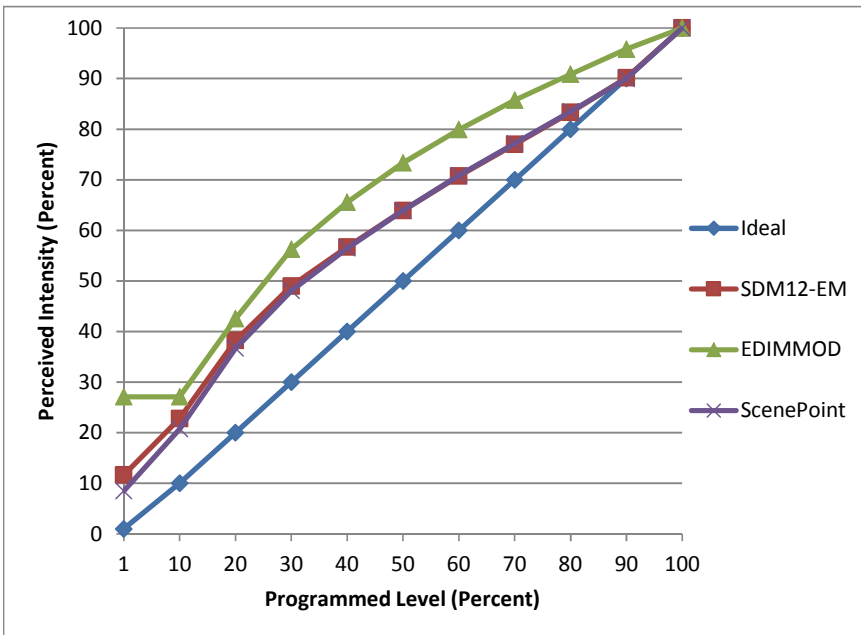


Manufacturer Premier Electrical Products
Model LED7PAR20G4/D/30/ES
Description PAR20 Lamp
Driver integrated
Nominal Power (W) 7
Dimming Control forward- and reverse-phase
Product Range
Test Date 2/16/2016

Dimmer Tested Against:	SDM12-EM	EDIMMOD	ScenePoint
Pass/Fail	Pass	Pass	Pass
Best-Fit Power Profile:			
Minimum ON	1	0	1
Maximum ON	95	52	95
Adjust	100	100	100
Light Output Range (vs. non-dimmed)			
Maximum (Perceived)	95.0%	95.3%	94.7%
Minimum (Perceived)	11.1%	25.8%	8.0%
Minimum (Measured)	1.2%	6.7%	0.6%

Linearity Curves (Best-fit Power Profile Applied):



Observations: