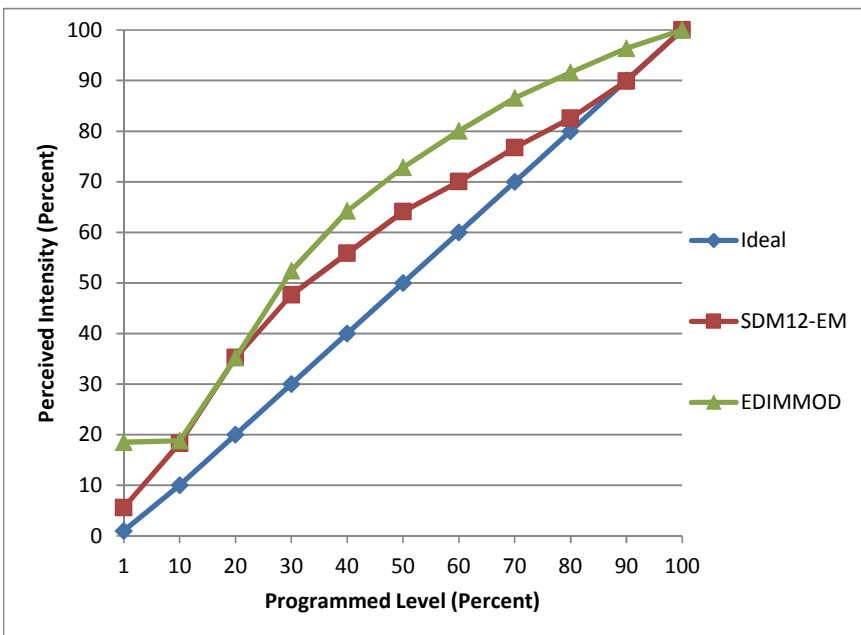


Manufacturer Premier Electrical Products
Model LED7GU10G4/D/30/ES
Description PAR16 Lamp
Driver integrated
Nominal Power (W) 6.5
Dimming Control forward- and reverse-phase
Product Range
Test Date 2/16/2016

Dimmer Tested Against:	SDM12-EM	EDIMMOD	ScenePoint
Pass/Fail	Pass	Pass	*
Best-Fit Power Profile:			
Minimum ON	1	0	
Maximum ON	93	52	95
Adjust	100	100	
Light Output Range (vs. non-dimmed)			
Maximum (Perceived)	95.2%	95.0%	95.7%
Minimum (Perceived)	5.3%	17.6%	0.3%
Minimum (Measured)	0.3%	3.1%	0.0%

Linearity Curves (Best-fit Power Profile Applied):



Observations:

*Only one sample provided, insufficient load to adequately test the ScenePoint dimmer.