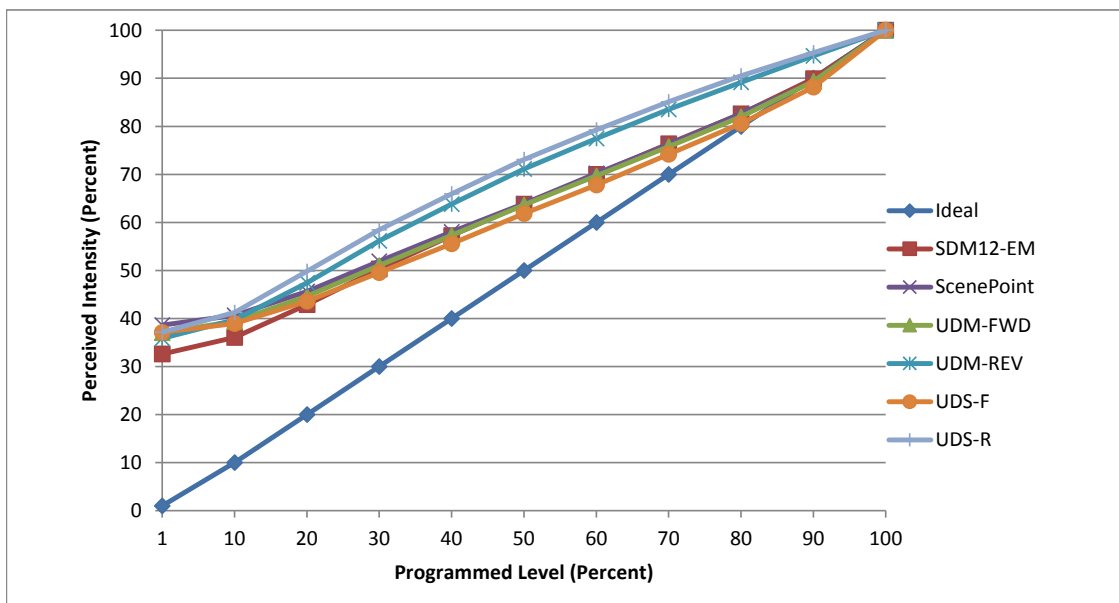


**Manufacturer** Philips  
**Model** 929001318103  
**Description** 3000K 400L E26 bulb  
**Driver** built-in  
**Nominal Power (W)** 5.5  
**Dimming Control** Forward and Reverse Phase  
**Product Range** Essential LEDspot  
**Test Date** 8 April, 2019

Dimmer Tested Against:	SDM12-EM	ScenePoint	UDM-FWD	UDM-REV	UDS-F	UDS-R
Pass/Fail	Pass	Pass	Pass	Pass	Pass	Pass
<b>Best-Fit Power Profile:</b>						
Minimum ON	2.5	5.5	4.5	3.5	6.5	2.5
Maximum ON	94.5	96	95.5	91	96.5	87.5
Adjust	100	100	100	100	100	100
<b>Light Output Range (vs. non-dimmed)</b>						
Maximum (Perceived), 120V	95.0%	94.9%	95.3%	95.1%	95.0%	95.3%
Minimum (Perceived)	31.0%	36.7%	35.3%	34.1%	35.3%	35.4%
Minimum (Measured)	9.6%	13.4%	12.5%	11.6%	12.4%	12.5%

Linearity Curves (Best-fit Power Profile Applied):



jwm

**Observations:** Test performed in five unit configuration.