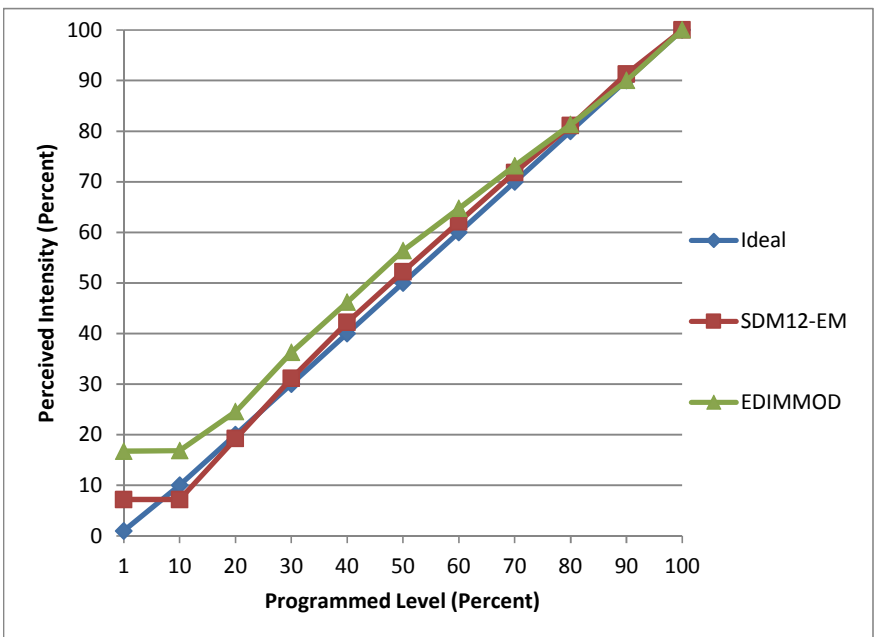


**Manufacturer** Nora  
**Model** NRM-614L85CDW  
**Description** 6" Downlight, gimbal  
**Driver** CREE LMD125-0018C440-1010000  
**Nominal Power (W)** 8.76  
**Dimming Control** forward- and reverse-phase  
**Product Range** Marquise  
**Test Date** 1/8/2015

Dimmer Tested Against:	SDM12-EM	EDIMMOD	
Pass/Fail	Pass	Pass	
<b>Best-Fit Power Profile:</b>			
Minimum ON	0	0	
Maximum ON	55	47	
Adjust	100	100	
<b>Light Output Range (vs. non-dimmed)</b>			
Maximum (Perceived)	95.6%	95.3%	
Minimum (Perceived)	6.9%	16.0%	
Minimum (Measured)	0.5%	2.5%	

Linearity Curves (Best-fit Power Profile Applied):



**Observations:**

3 samples differ in starting level and rate of start.