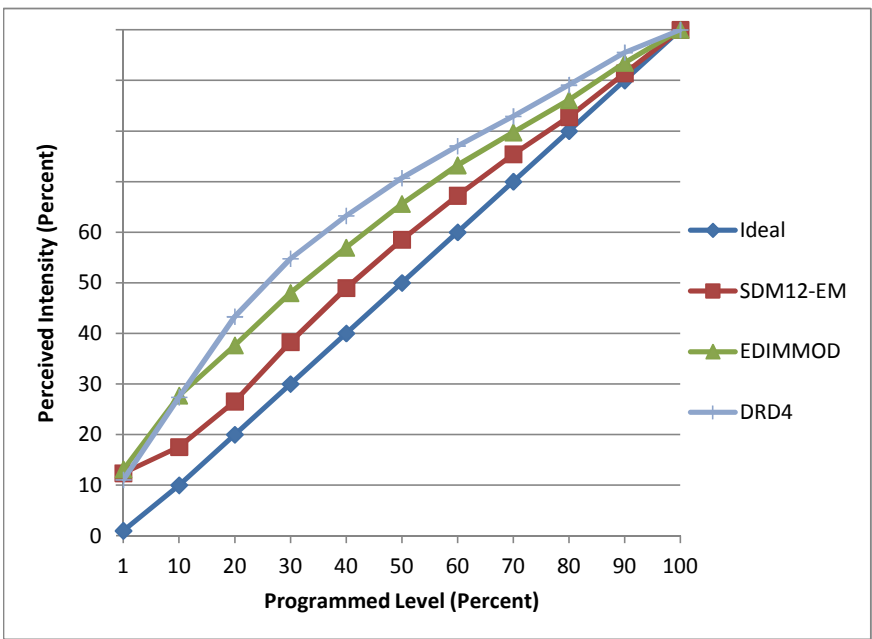


**Manufacturer** Nora Lighting  
**Model** NLEDR-68230WW  
**Description** 6" Retrofit Downlight Lamp/Trim Replacement  
**Driver** Integrated  
**Nominal Power (W)** 15  
**Dimming Control** Forward- and Reverse-phase  
**Product Range**  
**Test Date** 4/11/2014

Dimmer Tested Against:	SDM12-EM	EDIMMOD	DRD4
Pass/Fail	Pass	Pass	Pass
Best-Fit Power Profile:			Standard
Minimum ON	2	2	
Maximum ON	88	80	
Adjust	100	100	
Light Output Range (vs. non-dimmed)			
Maximum (Perceived)	95.2%	95.7%	100.0%
Minimum (Perceived)	11.8%	12.6%	11.1%
Minimum (Measured)	1.4%	1.6%	1.2%

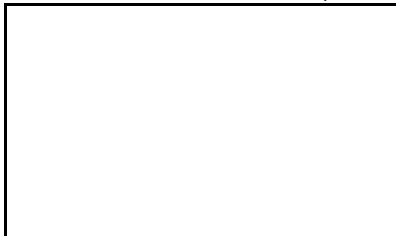
Linearity Curves (Best-fit Power Profile Applied):



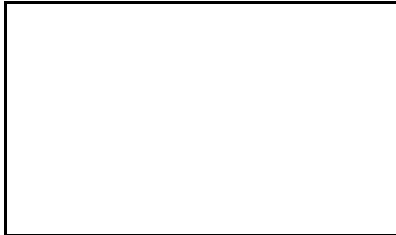
**Observations:**  
 DRD Minimum reliable level 4%

**Forward-phase**

100% Dim Level Waveform Capture

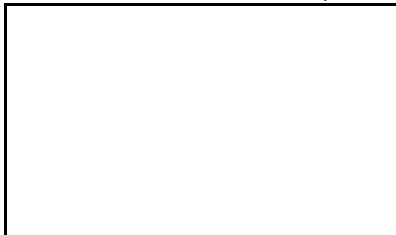


50% Dim Level Waveform Capture



**Reverse-phase**

100% Dim Level Waveform Capture



50% Dim Level Waveform Capture

