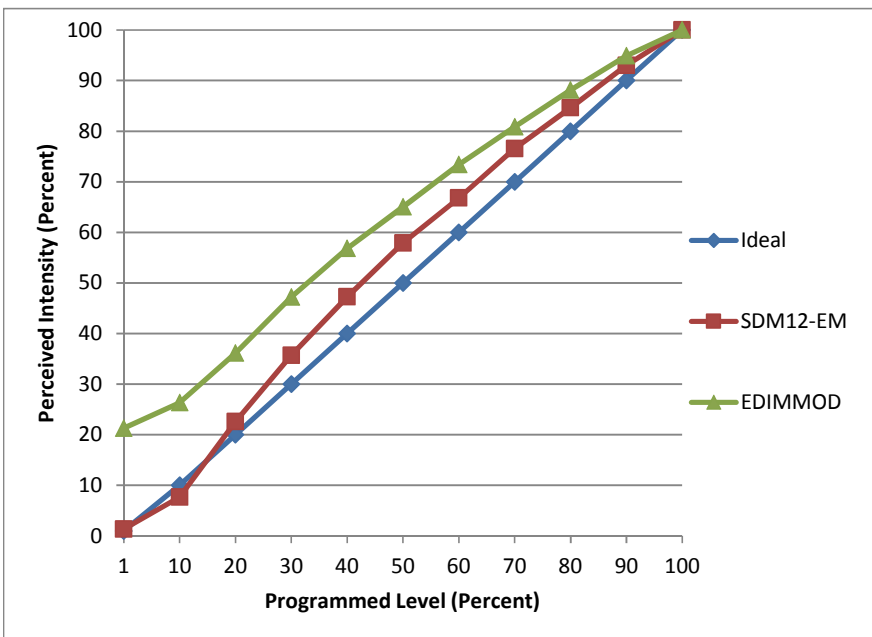


**Manufacturer** Number Eight Lighting  
**Model** Luxion 1000S  
**Description** 2" LED downlight  
**Driver** ISD-602-700-23-D  
**Nominal Power (W)** 14.7  
**Dimming Control** forward- and reverse-phase  
**Product Range** K - LED fixed position  
**Test Date** 1/4/2016

Dimmer Tested Against:	SDM12-EM	EDIMMOD	
Pass/Fail	Pass	Pass	
<b>Best-Fit Power Profile:</b>			
Minimum ON	5	3.5	
Maximum ON	73	66	
Adjust	100	100	
<b>Light Output Range (vs. non-dimmed)</b>			
Maximum (Perceived)	95.0%	95.0%	
Minimum (Perceived)	1.3%	20.2%	
Minimum (Measured)	0.02%	4.1%	

**Linearity Curves (Best-fit Power Profile Applied):**



**Observations:**

While forward-phase dimming linearity and low end performance are superior to reverse-phase, drivers buzz when dimmed forward-phase (no buzz reverse-phase) ScenePoint dimming follows SDM, but Minimum On value changes to 6. No minimum load issues.