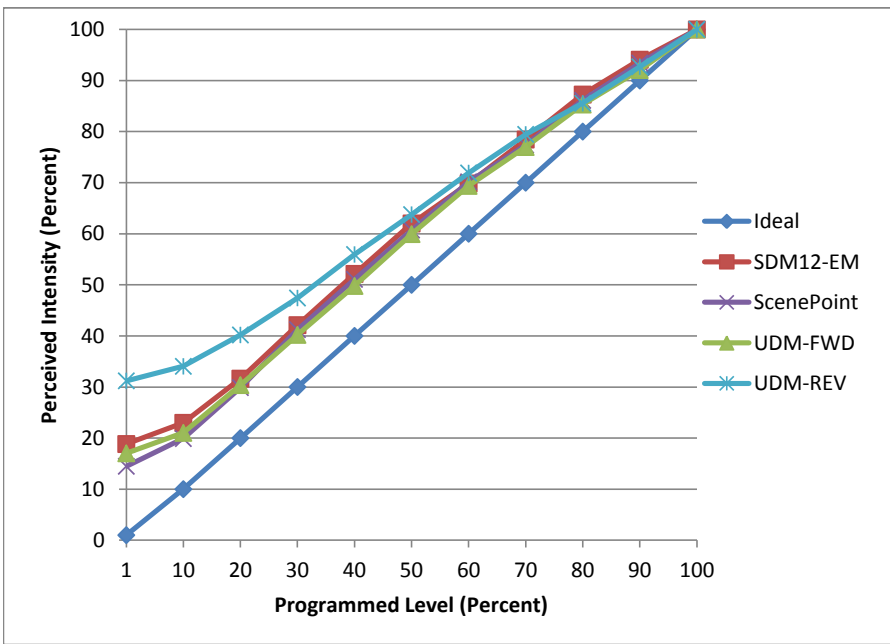


Manufacturer No 8 Lighting
Model 800K series
Description 2 in Downlight
Driver ISD-602-700-23-D
Nominal Power (W) 23
Dimming Control Forward and Reverse
Product Range -
Test Date 7/11/2016

Dimmer Tested Against:	SDM12-EM	ScenePoint	UDM-FWD	UDM-REV
Pass/Fail	Pass	Pass	Pass	Pass
Best-Fit Power Profile:				
Minimum ON	7	7	7	9
Maximum ON	73	73	74	70
Adjust	100	100	100	100
Light Output Range (vs. non-dimmed)				
Maximum (Perceived)	95.0%	95.8%	95.6%	95.4%
Minimum (Perceived)	17.9%	13.9%	16.3%	29.8%
Minimum (Measured)	3.2%	1.9%	2.6%	8.9%

Linearity Curves (Best-fit Power Profile Applied):



Observations:

bgk