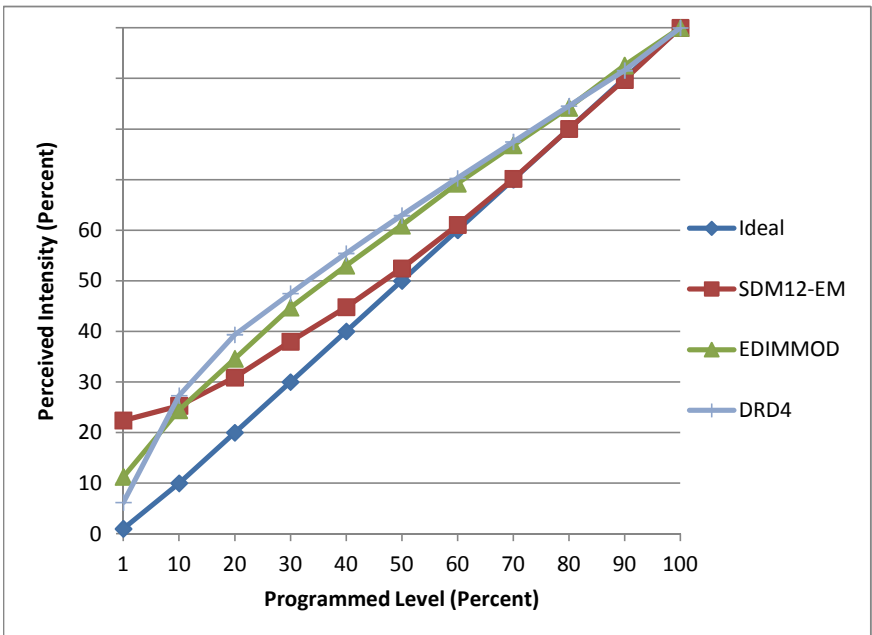


Manufacturer Nicor Lighting
Model DLR56
Description 5" & 6" Recessed LED Downlight
Driver integrated
Nominal Power (W) 13
Dimming Control Forward- and reverse-phase
Product Range Maxcor
Test Date 8/18/2014

Dimmer Tested Against:	SDM12-EM	EDIMMOD	DRD4
Pass/Fail	Pass	Pass	Pass
Best-Fit Power Profile:			Standard
Minimum ON	3.5	0.5	
Maximum ON	92	90	
Adjust	100	100	
Light Output Range (vs. non-dimmed)			
Maximum (Perceived)	95.0%	95.5%	100.0%
Minimum (Perceived)	21.3%	10.8%	6.2%
Minimum (Measured)	4.5%	1.2%	0.4%

Linearity Curves (Best-fit Power Profile Applied):



Observations:

ScenePoint Dimmer minimum load requires 2 or more fixtures per load.

RFLC Dimmer minimum on is 5%.