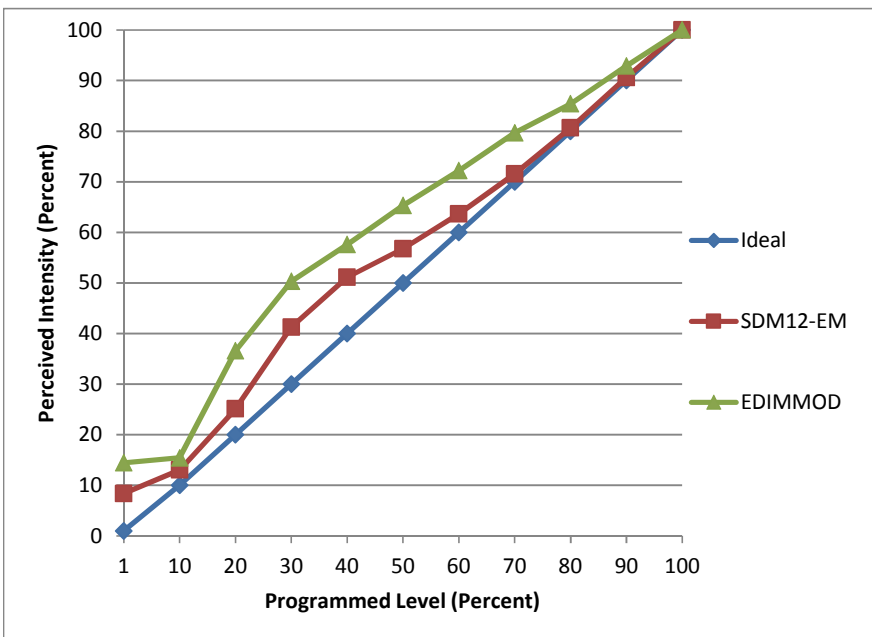


Manufacturer NICOR
Model DLR4-27-120-3K-WH
Description LED Retrofit Light Kit, 4" downlight
Driver integrated
Nominal Power (W) 9
Dimming Control forward- and reverse-phase
Product Range
Test Date 10/30/2015

Dimmer Tested Against:	SDM12-EM	EDIMMOD	
Pass/Fail	Pass	Pass	
Best-Fit Power Profile:			
Minimum ON	1.5	0	
Maximum ON	93	87	
Adjust	100	100	
Light Output Range (vs. non-dimmed)			
Maximum (Perceived)	95.0%	95.1%	
Minimum (Perceived)	8.0%	13.7%	
Minimum (Measured)	0.6%	1.9%	

Linearity Curves (Best-fit Power Profile Applied):



Observations:

ScenePoint Dimmer minimum load is not achieved with single fixture (multiple fixture samples unavailable at time of test to determine how many would be required).