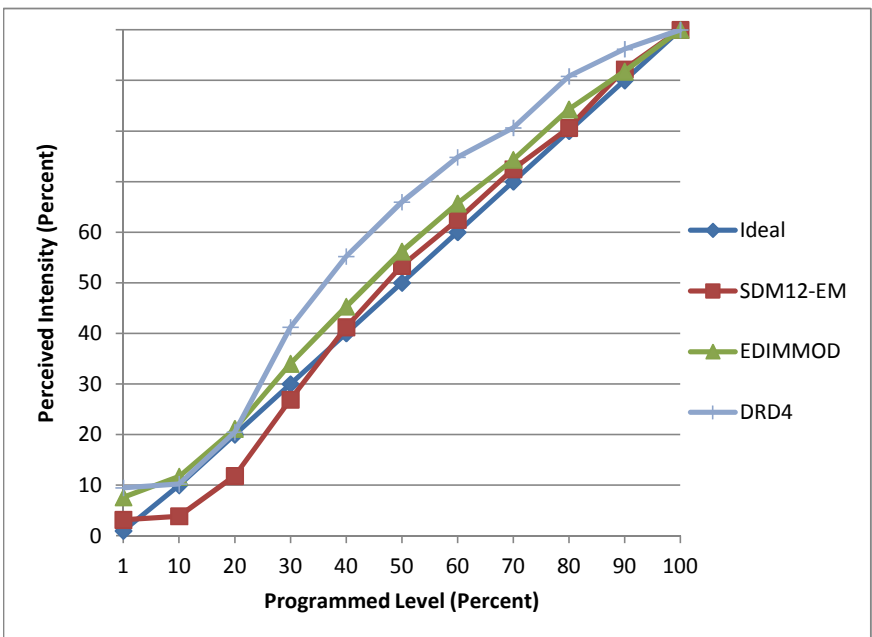


Manufacturer Minka-Aire
Model Merrimack - 1
Description Outdoor Wall Mount
Driver Integral
Nominal Power (W) 10
Dimming Control Forward- and Reverse-phase
Product Range
Test Date 8/4/2013

Dimmer Tested Against:	SDM12-EM	EDIMMOD	DRD4
Pass/Fail	Pass	Pass	Pass
Best-Fit Power Profile:			Standard
Minimum ON	5	7	
Maximum ON	85	80	
Adjust	75	95	
Light Output Range (vs. non-dimmed)			
Maximum (Perceived)	96.4%	137.8%	100.0%
Minimum (Perceived)	3.0%	10.5%	9.5%
Minimum (Measured)	0.1%	1.1%	0.9%

Linearity Curves (Best-fit Power Profile Applied):



Observations:

DRD4 non-linearity at bottom of range: dropping from 1% to 2%, intensity doubles.