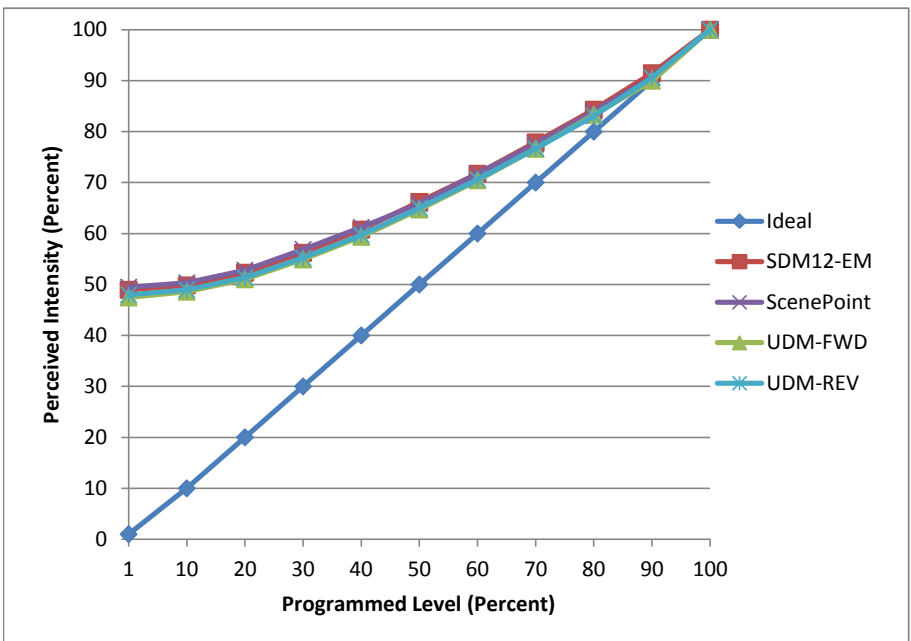


**Manufacturer** Luxon  
**Model** 5W 2700K E12  
**Description** Candelabra  
**Driver** Integrated  
**Nominal Power (W)** 5  
**Dimming Control** Forward and Reverse Phase  
**Product Range** -  
**Test Date** 6/26/2017

Dimmer Tested Against:	SDM12-EM	ScenePoint	UDM-FWD	UDM-REV
Pass/Fail	Pass	Pass	Pass	Pass
<b>Best-Fit Power Profile:</b>				
Minimum ON	21	24	23	23
Maximum ON	81	83	83	82
Adjust	100	100	100	100
<b>Light Output Range (vs. non-dimmed)</b>				
Maximum (Perceived), 120V	95.8%	95.0%	95.2%	95.2%
Minimum (Perceived)	46.9%	47.0%	45.2%	45.7%
Minimum (Measured)	22.0%	22.1%	20.4%	20.9%

Linearity Curves (Best-fit Power Profile Applied):



**Observations:**

bgk