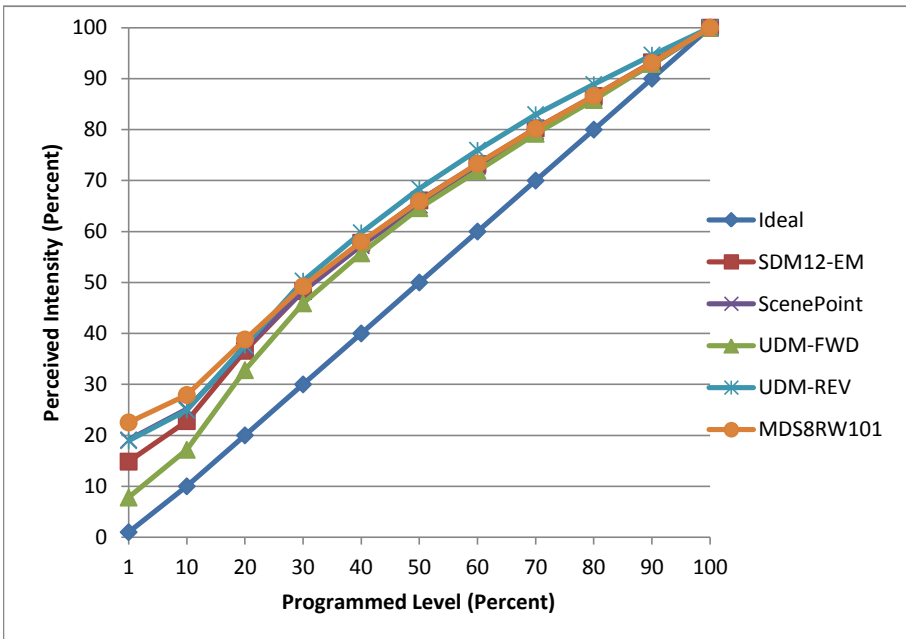


Manufacturer LumiMAX
Model PAR16 E26 5W
Description PAR16 Lamp
Driver Integrated
Nominal Power (W) 5
Dimming Control Forward and Reverse Phase
Product Range -
Test Date 9/11/2017

Dimmer Tested Against:	SDM12-EM	ScenePoint	UDM-FWD	UDM-REV	MDS8RW101
Pass/Fail	Pass	Pass	Pass	Pass	Pass
Best-Fit Power Profile:					
Minimum ON	2	3	2	3	3
Maximum ON	69	72	72	59	71
Adjust	100	100	100	100	100
Light Output Range (vs. non-dimmed)					
Maximum (Perceived), 120V	95.0%	95.4%	95.2%	95.2%	95.3%
Minimum (Perceived)	14.1%	18.2%	7.4%	18.0%	21.5%
Minimum (Measured)	2.0%	3.3%	0.6%	3.3%	4.6%

Linearity Curves (Best-fit Power Profile Applied):



Observations:

bgk