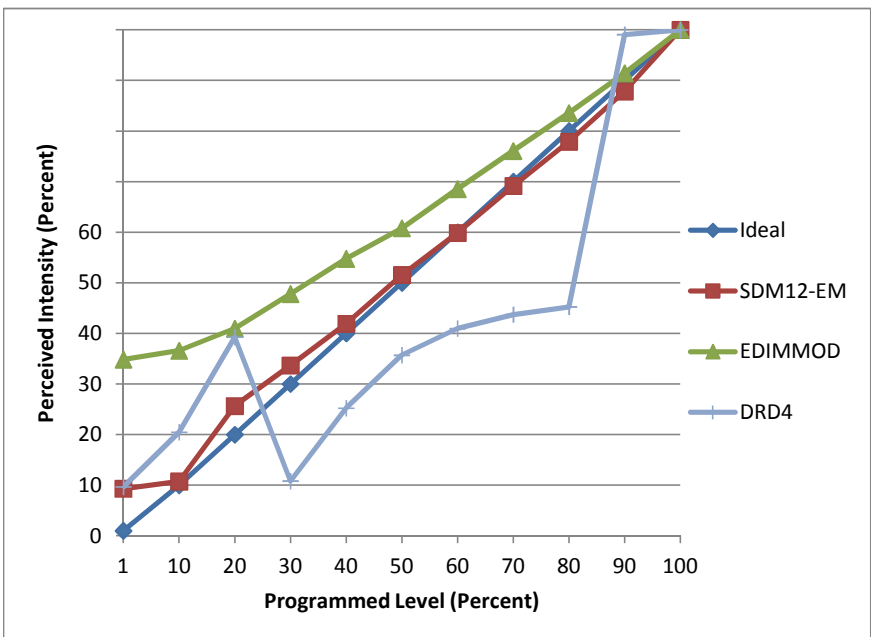


**Manufacturer** Lucifer Lighting  
**Model** DL089-2-119/154218  
**Description** Xicato Engine Downlight  
**Driver** Lutron Hi-lume A-Series  
**Nominal Power (W)**  
**Dimming Control** Forward-phase as per Lutron; also reverse-phase by observation  
**Product Range**  
**Test Date** 5/19/2014

Dimmer Tested Against:	SDM12-EM	EDIMMOD	DRD4
Pass/Fail	Pass	Pass	Fail
Best-Fit Power Profile:			Standard
Minimum ON	25	20	
Maximum ON	85	75	
Adjust	100	100	
Light Output Range (vs. non-dimmed)			
Maximum (Perceived)	98.9%	97.0%	100.0%
Minimum (Perceived)	9.2%	33.8%	9.7%
Minimum (Measured)	0.8%	11.4%	0.9%

Linearity Curves (Best-fit Power Profile Applied):



**Observations:** Be certain to derate forward-phase dimmers to 20% of rating. Current oscillations are high. While manufacturer recommends forward-phase, reverse-phase waveform is better-behaved. Best linearity is via forward-phase dimmers that are native to Vantage. DRD4 dimmer failed against this sample because of the brightness reversal that occurs below 30%.