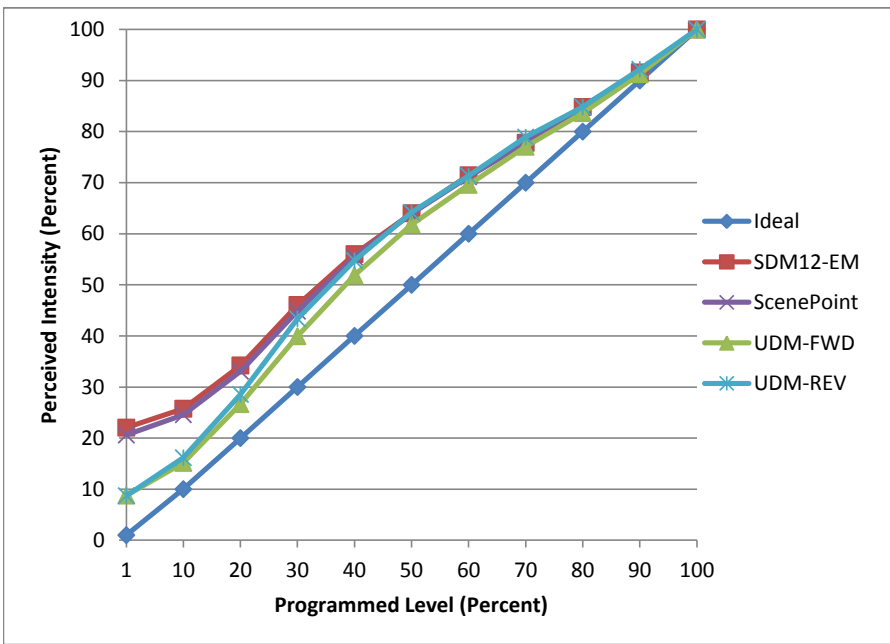


Manufacturer Liteline
Model P30LLED14W-30KFL-WH
Description PAR 30 Lamp
Driver Integrated
Nominal Power (W) 14
Dimming Control Forward and Reverse
Product Range
Test Date 5/12/2016

Dimmer Tested Against:	SDM12-EM	ScenePoint	UDM-FWD	UDM-REV
Pass/Fail	Pass	Pass	Pass	Pass
Best-Fit Power Profile:				
Minimum ON	3	3	1	1
Maximum ON	92	91	93	91
Adjust	100	100	100	100
Light Output Range (vs. non-dimmed)				
Maximum (Perceived)	95.0%	95.0%	95.1%	95.6%
Minimum (Perceived)	21.0%	19.6%	8.3%	8.3%
Minimum (Measured)	4.4%	3.8%	0.7%	0.7%

Linearity Curves (Best-fit Power Profile Applied):



Observations:

bgk