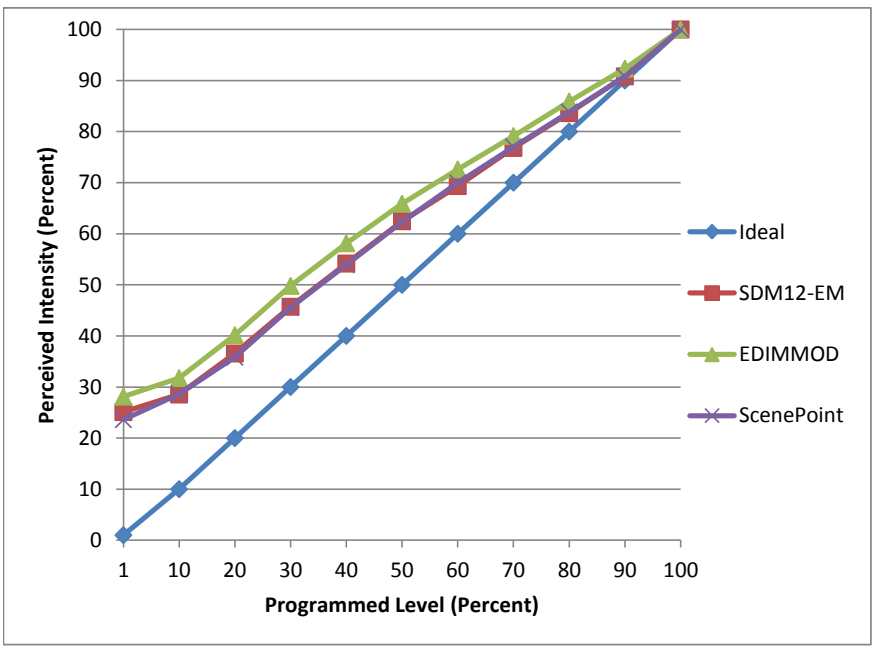


Manufacturer Liteline
Model P20LED8W-30KFL-WH
Description PAR20 Lamp
Driver Integrated
Nominal Power (W) 8
Dimming Control Forward and reverse
Product Range
Test Date 4/13/2016

Dimmer Tested Against:	SDM12-EM	UDM	ScenePoint
Pass/Fail	Pass	Pass	Pass
Best-Fit Power Profile:			
Minimum ON	4	4	4
Maximum ON	92	91	93
Adjust	100	100	100
Light Output Range (vs. non-dimmed)			
Maximum (Perceived)	95.2%	95.2%	95.3%
Minimum (Perceived)	23.9%	26.8%	22.5%
Minimum (Measured)	5.7%	7.2%	5.1%

Linearity Curves (Best-fit Power Profile Applied):



Observations:

Buzzing on Forward phase

bgk