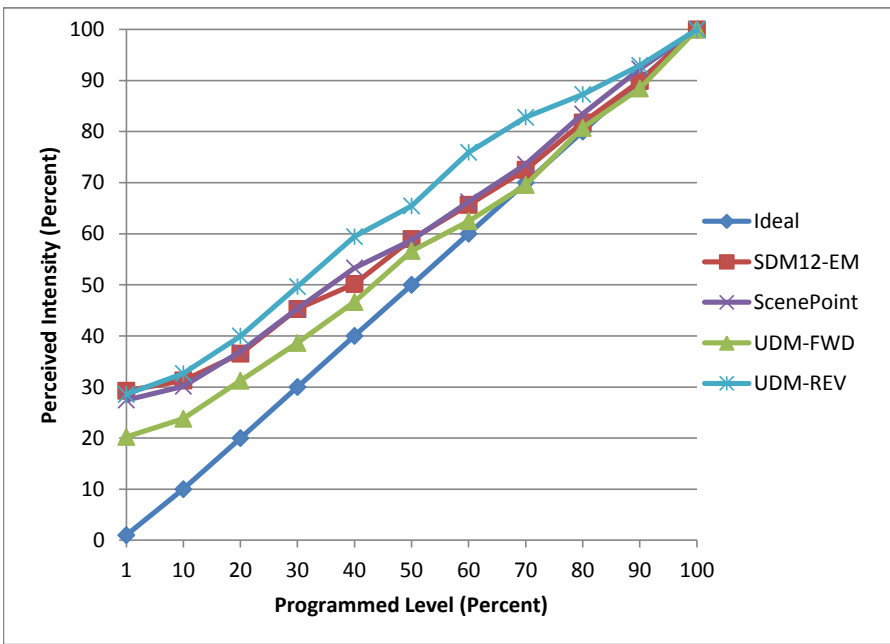


Manufacturer Liteline
Model P16LED8W-30K-WH
Description Par 16 Lamp
Driver Integrated
Nominal Power (W) 8
Dimming Control Forward and Reverse
Product Range
Test Date 4/28/2016

Dimmer Tested Against:	SDM12-EM	ScenePoint	UDM-FWD	UDM-REV
Pass/Fail	Pass	Pass	Pass	Pass
Best-Fit Power Profile:				
Minimum ON	5	5	3	3
Maximum ON	95	95	97	85
Adjust	100	100	100	100
Light Output Range (vs. non-dimmed)				
Maximum (Perceived)	95.7%	95.3%	95.6%	95.3%
Minimum (Perceived)	28.0%	26.2%	19.3%	27.2%
Minimum (Measured)	7.8%	6.8%	3.7%	7.4%

Linearity Curves (Best-fit Power Profile Applied):



Observations:

Slight buzzing while dimming on Forward Phase