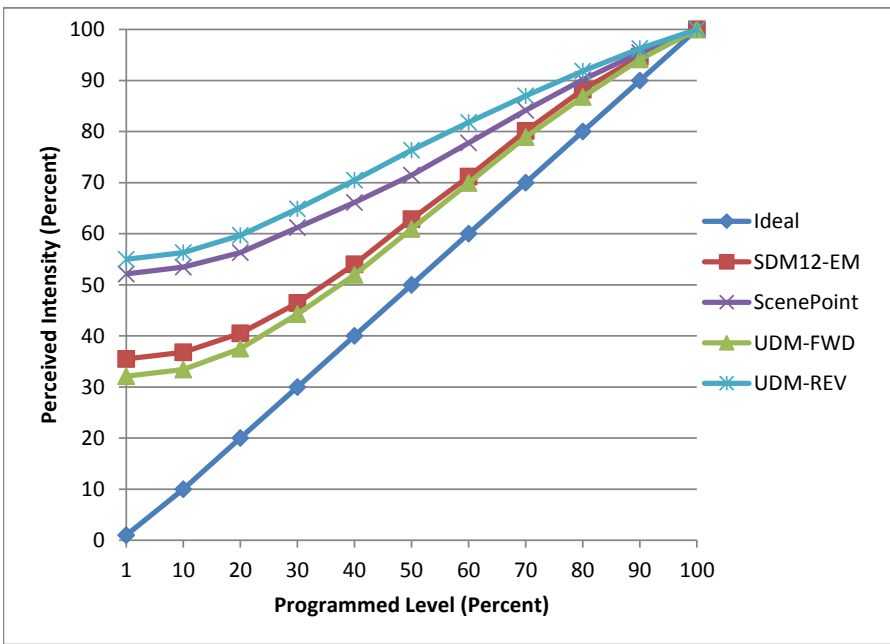


**Manufacturer** Liteline  
**Model** MR16LED8W-30K-WH  
**Description** MR16 Lamp  
**Driver** Ambiance 9454-12 (REV), Juno IC44N (FWD)  
**Nominal Power (W)** 8  
**Dimming Control** Forward and Reverse  
**Product Range**  
**Test Date** 5/31/2016

Dimmer Tested Against:	SDM12-EM	ScenePoint	UDM-FWD	UDM-REV
Pass/Fail	Pass	Pass	Pass	Pass
<b>Best-Fit Power Profile:</b>				
Minimum ON	10	15	10	15
Maximum ON	30	27	31	50
Adjust	100	100	100	100
<b>Light Output Range (vs. non-dimmed)</b>				
Maximum (Perceived)	95.5%	95.1%	95.3%	95.4%
Minimum (Perceived)	33.9%	49.6%	30.6%	52.5%
Minimum (Measured)	11.5%	24.6%	9.4%	27.6%

**Linearity Curves (Best-fit Power Profile Applied):**



**Observations:**

Minimum Load issues creates  
 Loud buzzing at full brightness on SDM-12 and while dimming on scenepoint up to ~70%

Transistional jumps

bgk