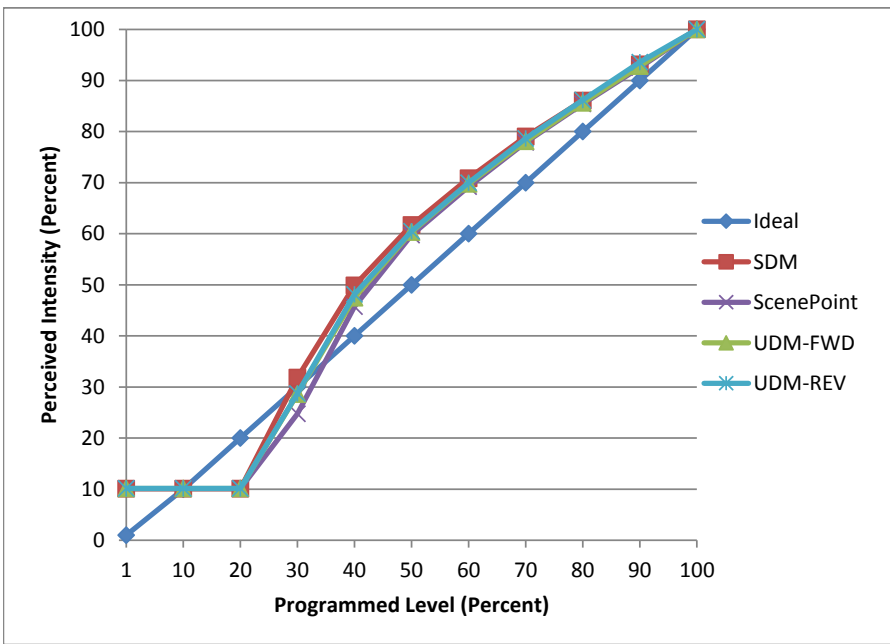


**Manufacturer** Liteline  
**Model** LED-TP1-12-WW  
**Description** Indoor Tape Light  
**Driver** Lutron LED-HWBDIM3-24-40  
**Nominal Power (W)** 1.3  
**Dimming Control** Forward and Reverse  
**Product Range**  
**Test Date** 6/9/2016

Dimmer Tested Against:	SDM12-EM	ScenePoint	UDM-FWD	UDM-REV
Pass/Fail	Pass	Pass	Pass	Pass
<b>Best-Fit Power Profile:</b>				
Minimum ON	1	1	1	1
Maximum ON	86	87	86	86
Adjust	-25	-25	-25	-25
<b>Light Output Range (vs. non-dimmed)</b>				
Maximum (Perceived)	95.7%	95.5%	95.2%	95.7%
Minimum (Perceived)	9.6%	9.6%	9.6%	9.7%
Minimum (Measured)	0.9%	0.9%	0.9%	0.9%

**Linearity Curves (Best-fit Power Profile Applied):**



**Observations:**

Triac dimming is not recommended

bgk