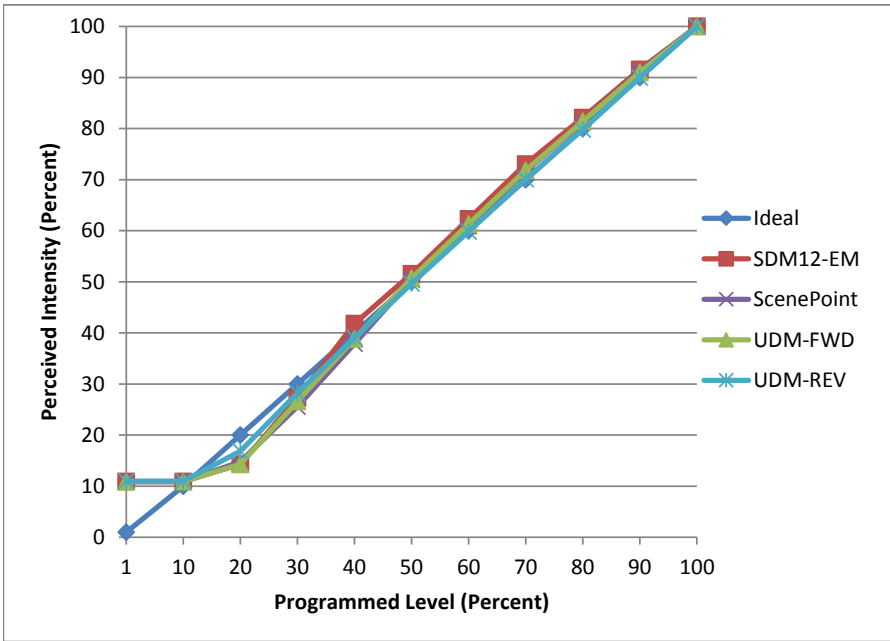


**Manufacturer** Liteline  
**Model** LED-TP1-12-WW  
**Description** Indoor Tape Light  
**Driver** Lutron LED-HWBDIM2-24-40  
**Nominal Power (W)** 1.3  
**Dimming Control** Forward and Reverse  
**Product Range**  
**Test Date** 6/9/2016

Dimmer Tested Against:	SDM12-EM	ScenePoint	UDM-FWD	UDM-REV
Pass/Fail	Pass	Pass	Pass	Pass
<b>Best-Fit Power Profile:</b>				
Minimum ON	5	7	7	10
Maximum ON	84	85	85	81
Adjust	-50	-50	-50	-25
<b>Light Output Range (vs. non-dimmed)</b>				
Maximum (Perceived)	96.1%	96.4%	95.6%	95.5%
Minimum (Perceived)	10.5%	10.5%	10.4%	10.5%
Minimum (Measured)	1.1%	1.1%	1.1%	1.1%

**Linearity Curves (Best-fit Power Profile Applied):**



**Observations:**

Light changes as it warms up

bgk