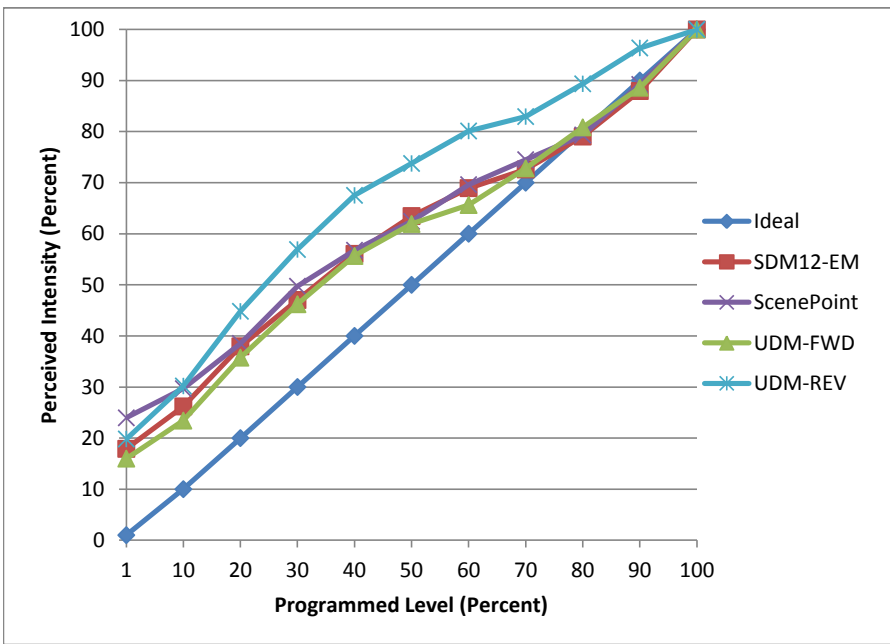


Manufacturer Liteline
Model GU10LED8W-30K-WH
Description GU10 lamp
Driver Integrated
Nominal Power (W) 8
Dimming Control Forward and Reverse
Product Range
Test Date 5/3/2016

Dimmer Tested Against:	SDM12-EM	ScenePoint	UDM-FWD	UDM-REV
Pass/Fail	Pass	Pass	Pass	Pass
Best-Fit Power Profile:				
Minimum ON	1	2	1	1
Maximum ON	97	96	97	88
Adjust	100	100	100	100
Light Output Range (vs. non-dimmed)				
Maximum (Perceived)	95.6%	95.8%	95.5%	95.1%
Minimum (Perceived)	17.1%	23.0%	15.3%	18.8%
Minimum (Measured)	2.9%	5.3%	2.3%	3.6%

Linearity Curves (Best-fit Power Profile Applied):



Observations:

bgk