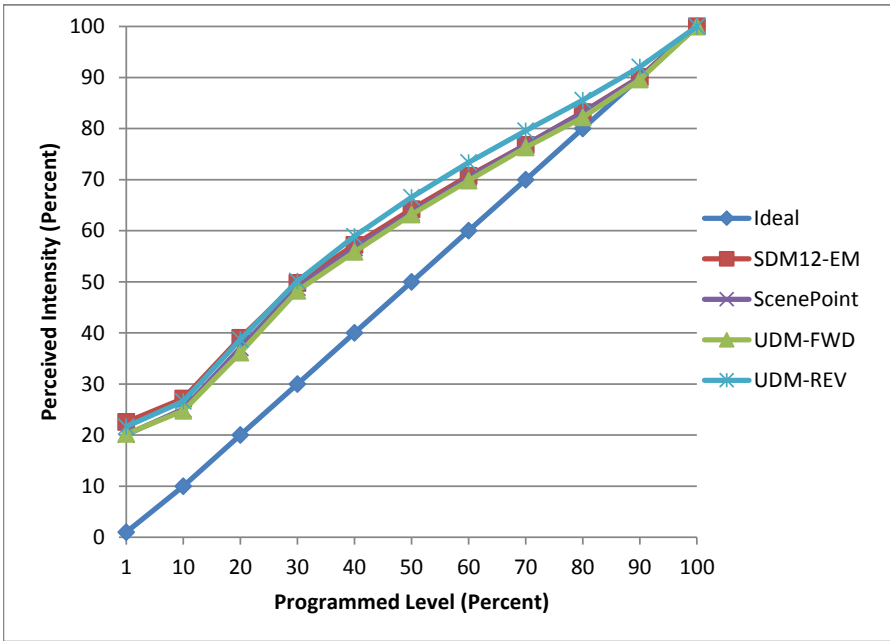


**Manufacturer** Liteline  
**Model** G4-P30LLED10W-30KFES  
**Description** PAR 30 Lamp  
**Driver** Integrated  
**Nominal Power (W)** 10  
**Dimming Control** Forward and Reverse  
**Product Range**  
**Test Date** 5/12/2016

Dimmer Tested Against:	SDM12-EM	ScenePoint	UDM-FWD	UDM-REV
Pass/Fail	Pass	Pass	Pass	Pass
<b>Best-Fit Power Profile:</b>				
Minimum ON	3	3	3	3
Maximum ON	93	94	94	93
Adjust	100	100	100	100
<b>Light Output Range (vs. non-dimmed)</b>				
Maximum (Perceived)	95.1%	95.1%	95.2%	95.1%
Minimum (Perceived)	21.5%	19.1%	19.3%	20.6%
Minimum (Measured)	4.6%	3.6%	3.7%	4.2%

**Linearity Curves (Best-fit Power Profile Applied):**



**Observations:**

bgk