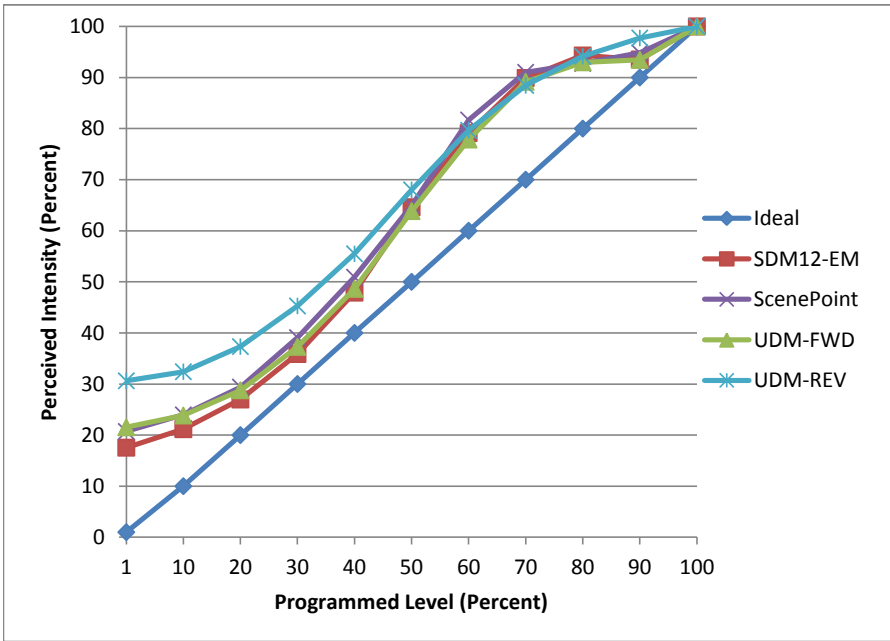


Manufacturer Liteline
Model GU10LED6W-30K-WH
Description GU10 lamp
Driver Integrated
Nominal Power (W) 6
Dimming Control Forward and Reverse
Product Range
Test Date 5/3/2016

Dimmer Tested Against:	SDM12-EM	ScenePoint	UDM-FWD	UDM-REV
Pass/Fail	Pass	Pass	Pass	Pass
Best-Fit Power Profile:				
Minimum ON	14	17	17	12
Maximum ON	91	93	92	50
Adjust	100	100	100	100
Light Output Range (vs. non-dimmed)				
Maximum (Perceived)	95.6%	95.3%	95.2%	95.2%
Minimum (Perceived)	16.8%	19.7%	20.5%	29.1%
Minimum (Measured)	2.8%	3.9%	4.2%	8.5%

Linearity Curves (Best-fit Power Profile Applied):



Observations:

bgk