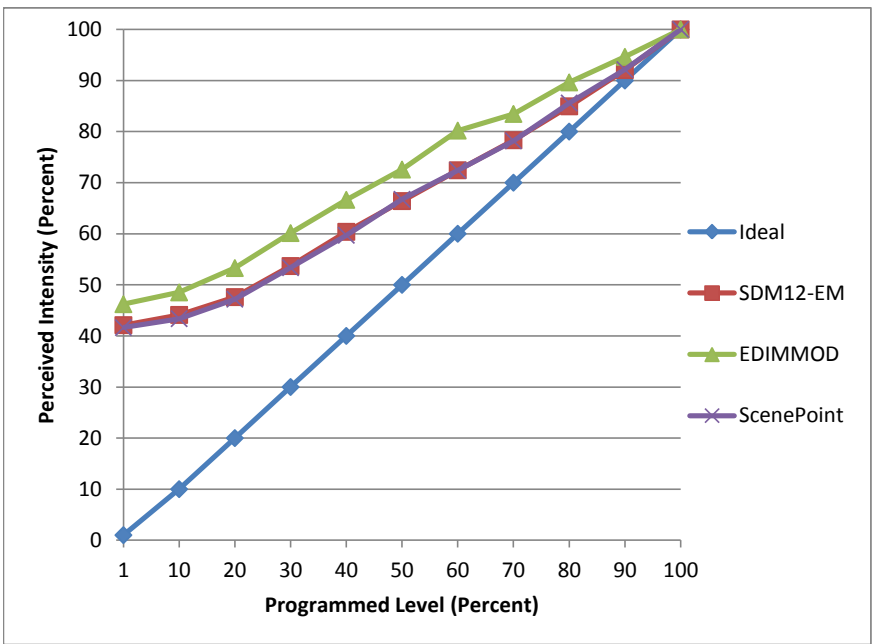


Manufacturer Liteline
Model G4-A19LED9W-30K-ES
Description A19 Lamp
Driver Integrated
Nominal Power (W) 9
Dimming Control Forward and Reverse
Product Range
Test Date 4/11/2016

Dimmer Tested Against:	SDM12-EM	EDIMMOD	ScenePoint
Pass/Fail	Pass	Pass	Pass
Best-Fit Power Profile:			
Minimum ON	12	7	12
Maximum ON	93	85	93
Adjust	100	100	100
Light Output Range (vs. non-dimmed)			
Maximum (Perceived)	95.3%	95.7%	95.6%
Minimum (Perceived)	40.1%	44.2%	39.8%
Minimum (Measured)	16.1%	19.6%	15.8%

Linearity Curves (Best-fit Power Profile Applied):



Observations:

Buzzing sound on forward and scenepoint
 transistional jump in the lower region on raising

bgk