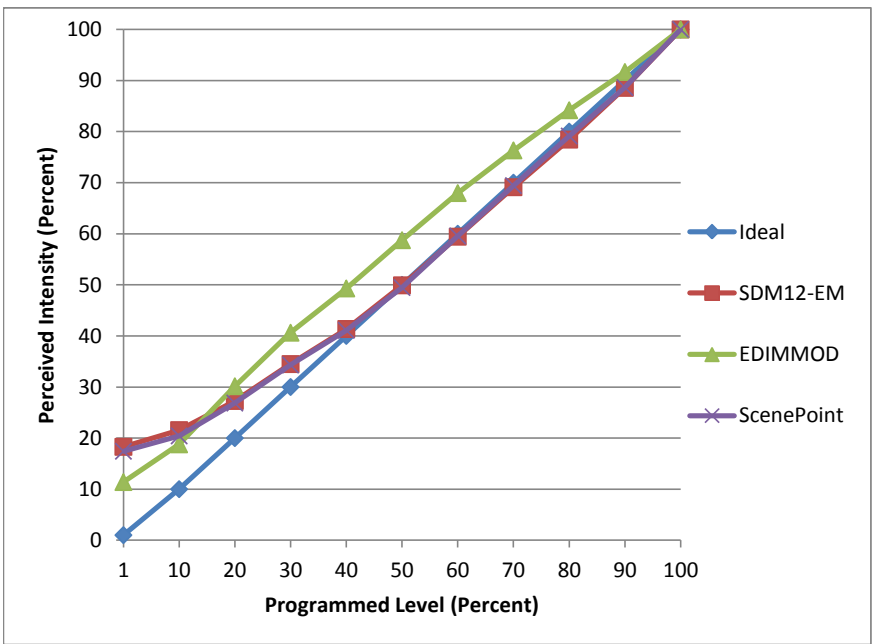


Manufacturer Liteline
Model A19LED7W-30K-WH
Description A19 Lamp
Driver Integrated
Nominal Power (W) 7
Dimming Control forward and reverse
Product Range
Test Date 4/12/2016

Dimmer Tested Against:	SDM12-EM	EDIMMOD	ScenePoint
Pass/Fail	Pass	Pass	Pass
Best-Fit Power Profile:			
Minimum ON	5	1	5
Maximum ON	93	89	93
Adjust	100	100	100
Light Output Range (vs. non-dimmed)			
Maximum (Perceived)	95.6%	95.0%	95.2%
Minimum (Perceived)	17.5%	10.8%	16.6%
Minimum (Measured)	3.1%	1.2%	2.7%

Linearity Curves (Best-fit Power Profile Applied):



Observations:

Buzzing occurs when less than 100% on forward phase
 Recommend Reverse Phase

bgk