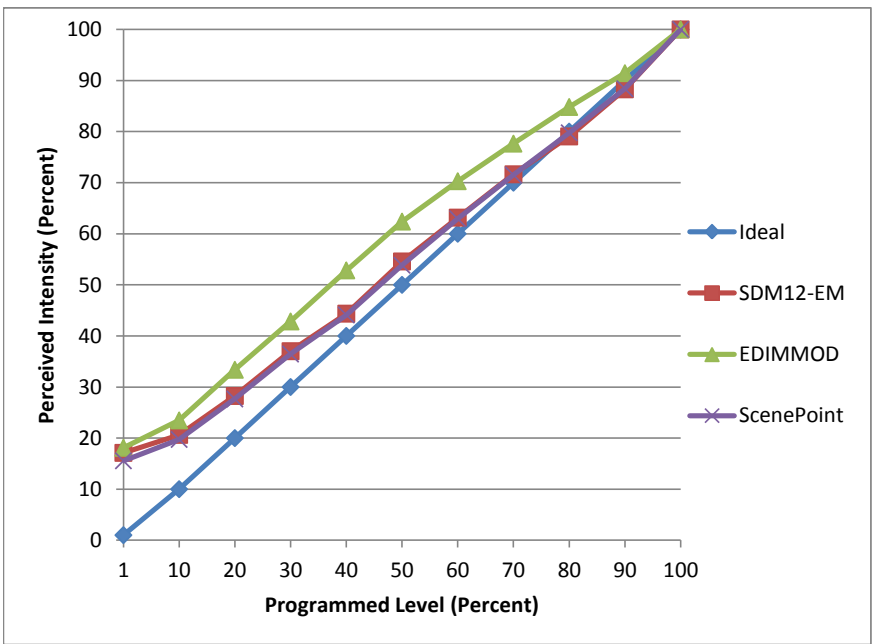


Manufacturer Liteline
Model A19LED10W-30K-WH
Description A19 Lamp
Driver Integrated
Nominal Power (W) 10
Dimming Control forward and reverse
Product Range
Test Date 4/12/2016

Dimmer Tested Against:	SDM12-EM	EDIMMOD	ScenePoint
Pass/Fail	Pass	Pass	Pass
Best-Fit Power Profile:			
Minimum ON	4	2	4
Maximum ON	93	90	93
Adjust	100	100	100
Light Output Range (vs. non-dimmed)			
Maximum (Perceived)	95.0%	95.0%	95.1%
Minimum (Perceived)	16.3%	17.2%	14.8%
Minimum (Measured)	2.6%	3.0%	2.2%

Linearity Curves (Best-fit Power Profile Applied):



Observations:

bgk