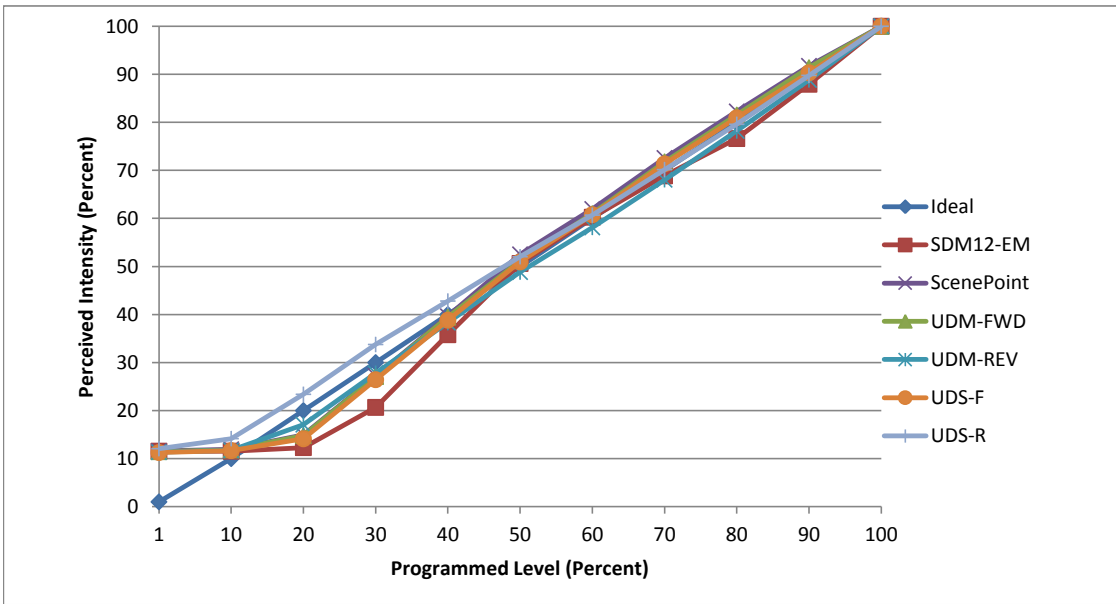


**Manufacturer** Light Headed  
**Model** 2 197 TL 01 BRO40 27 8010  
**Description** BRO Light  
**Driver** Lutron LTEAU1UKS HA035  
**Nominal Power (W)** -  
**Dimming Control** Forward and Reverse Phase  
**Product Range** -  
**Test Date** -

Dimmer Tested Against:	SDM12-EM	SCP	UDM-FWD	UDM-REV	UDS-F	UDS-R
Pass/Fail	Pass	Pass	Pass	Pass	Pass	Pass
<b>Best-Fit Power Profile:</b>						
Minimum ON	5	6	6	13	10	10
Maximum ON	87	83	83	82	87	74
Adjust	-30	-40	-35	-10	-50	40
<b>Light Output Range (vs. non-dimmed)</b>						
Maximum (Perceived), 120V	95.1%	95.0%	95.6%	95.7%	95.8%	95.3%
Minimum (Perceived)	11.0%	11.0%	10.9%	10.9%	10.8%	11.5%
Minimum (Measured)	1.2%	1.2%	1.2%	1.2%	1.2%	1.3%

Linearity Curves (Best-fit Power Profile Applied):



**Observations:**

bgk