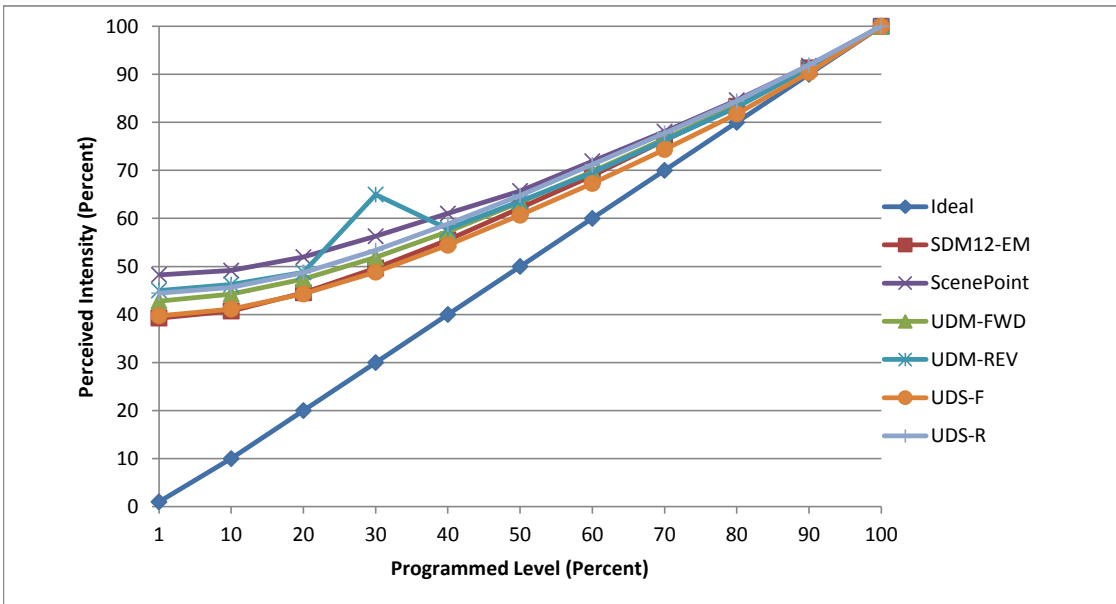


Manufacturer Kedsum
Model X001FM0AXP
Description Edison Bulb
Driver Integrated
Nominal Power (W) 6
Dimming Control Forward and Reverse Phase
Product Range -
Test Date 11/15/2017

Dimmer Tested Against:	SDM12-EM	SCP	UDM-FWD	UDM-REV	UDS-F	UDS-R
Pass/Fail	Pass	Pass	Pass	Pass	Pass	Pass
Best-Fit Power Profile:						
Minimum ON	20	27	23	27	27	20
Maximum ON	72	75	75	76	80	73
Adjust	100	100	100	100	100	100
Light Output Range (vs. non-dimmed)						
Maximum (Perceived), 120V	95.0%	95.4%	95.1%	95.1%	95.4%	95.2%
Minimum (Perceived)	37.3%	46.1%	40.7%	42.8%	37.9%	42.3%
Minimum (Measured)	13.9%	21.2%	16.5%	18.3%	14.4%	17.9%

Linearity Curves (Best-fit Power Profile Applied):



Observations:

bgk